



AGENDA
MEETING OF THE WEST BASIN WATER RIGHTS PANEL
VIA ZOOM TELECONFERENCE

Date and Time:
Tuesday, February 1, 2022 at 12:00 P.M

Join Zoom Meeting
<https://us02web.zoom.us/j/81666462166?pwd=eUduTTZrTIJsWXQzK0dhdhFNVVHlnQT09>
Meeting ID: 816 6646 2166
Passcode: 400059

- CALL TO ORDER
 - ❖ Quorum
 - ❖ Self-Introduction
- APPROVAL OF December 2021 MINUTES
- WATERMASTER UPDATES
 - ❖ Administrative Body Updates – Esther Rojas/Rob Beste
 - ❖ WBWRP Updates – Lourdes Vargas
 - Discussion: Notice of Stipulation in Intervention of Lockheed Martin Corp.
- TREASURER’S REPORT – Katherine Nutting
- DISCUSSIONS

Chairperson, Lourdes Vargas



**ANNUAL WEST BASIN WATER RIGHTS PANEL MEETING
VIA ZOOM TELECONFERENCE**

Tuesday, November 2, 2021

MINUTES

Chairperson Lourdes Vargas called the meeting to order at 12:14 P.M. Nina Tarnay recorded the minutes. Ms. Vargas determined there was a quorum of the West Basin Water Rights Panel and asked for self-introductions.

The following West Basin Water Rights Panel members were in attendance:

Lourdes Vargas, City of Manhattan Beach
Katherine Nutting, Golden State Water Co.
Charles Campbell, Torrance Refining Co.
Chuck Schaich, City of Torrance
Ron Sorensen, California Water Service Co.

The following persons were also in attendance:

Esther Rojas, Water Replenishment District
Manuel Aguilar, LADWP
Rudy Terriquez, LADWP
Carla Dillon, City of Lomita
Toby Moore, Golden State Water Co.
Andrew Thomas, WRD
Mark Andersen, City of Lomita
Bob Vaughey, Rolling Hills Country Club

APPROVAL OF MINUTES

Minutes from the August 2021 meeting were unanimously approved and filed following motion by Chuck Campbell and seconded Chuck Schaich.

WATERMASTER UPDATES

Administrative Body Update:

Esther Rojas reported:

- Ms. Rojas reviewed the Administrative Body Report included in the meeting packet.
- Watermaster Report: The annual Watermaster Report has been sent to the Panel, water rights holders, pumpers and interested parties. The public comment period is open until Tuesday, November 30th. The Panel is scheduled to vote on approval of the Report at its December meeting.

WBWRP Updates

Lourdes Vargas: No updates.

TREASURER'S REPORT

- Chuck Schaich presented the Treasurer's Report for August-October 2021. The reports were received and filed.

DISCUSSIONS

- The Panel members discussed outstanding invoices and how to deal with orphaned water right. The Panel will seek advice from counsel on how to handle the orphaned water rights.

NEXT MEETING

- The next WBWRP Meeting will be on December 7, 2021 at 12:00 P.M. via teleconference.

ADJOURNMENT

- Chairperson Lourdes Vargas adjourned the meeting to closed session at 12:40 P.M.

Lourdes Vargas, Chairperson

Dated

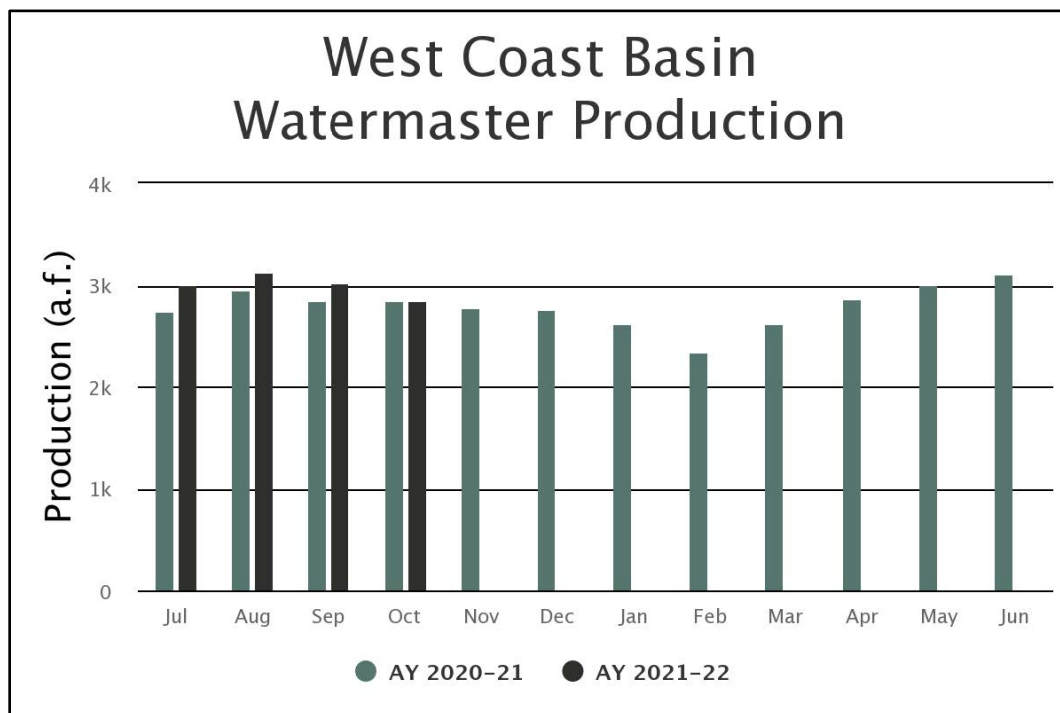
Nina Tarnay, Executive Administrator

Dated

Date: December 7, 2021
To: West Coast Basin Water Rights Panel
From: Esther Rojas, Water Replenishment District
Subject: Administrative Body Report

Groundwater Pumping

- For the Administrative Year (AY) 2021-22 Jul- Oct, West Coast Basin groundwater pumping was 12,030.21 acre-feet, which is 612.74 acre-feet higher or 5.4% more than the same period in AY 2020-21. Various parties continue to have a significant increase in pumping when compared to the previous AY, including Philips 66 Company, Golden State Water Company, Tesoro Refining & Marketing Co., and California Water Service Company. The tables attached provide detailed basin production and basin pumping trends by purveyor. The chart below summarizes and compares the AY 2020-21 and AY 2021-22 pumping.



Water Rights Activity

- Processed as of December 1, 2021, there have been three leases transferring 3,183.50 acre-feet. All leases are with flex. The attached table gives details of these transactions.
- There have been no storage transactions to date for AY 2021-22.

Watermaster Budget

- Staff mailed out reminder letters on July 29 to entities with outstanding 2021-22 invoices. Invoices were originally sent on May 19 and due on June 28. Invoices include assessments for the Administrative Body only. Attached is a list of entities with an outstanding invoice.

Other Announcements

- Staff finalized the annual Watermaster Report for AY 2020-21, which summarizes the basins transactions and activities. The Report was submitted to the West Coast Basin Water Rights Panel on October 13, in accordance with the Amended Judgment. In addition, staff sent the report to all parties of the Judgment, water rights holders, and stakeholders. Per the Panel's request, staff sent a reminder email to all stakeholders on November 2 extending the comment period to November 30. The report is also posted on the WRD website. Staff received a few comments and incorporated one minor edit to the updated draft (attached). The Water Rights Panel needs to adopt an annual report on or before December 15.

West Coast Basin Production Trends

West Basin	July 2020 - October 2020	July 2021 - October 2021	Difference	%Change
ABC Nursery	9.00	0.00	-9.00	-100.00
Cal. Water Service Co. Alpha 7050	294.99	637.75	342.76	53.75
Cal. Water Service Co./Hawthorne Lease	30.57	14.02	-16.55	-118.05
Cal. Water Service Co. Dominguez - WB	864.19	644.19	-220.00	-34.15
West Basin Brewer Desalter	347.56	0.00	-347.56	-100.00
Golden State Water Co. - WB	1,359.28	1,606.34	247.06	15.38
Hillside Memorial Park	52.72	51.13	-1.59	-3.11
Inglewood, City	1,081.57	760.52	-321.05	-42.21
Kinder Morgan Liquids Terminals	14.28	10.01	-4.27	-42.66
L.A. County Department of Parks & Rec - WB	192.44	150.44	-42.00	-27.92
Lomita, City	0.07	0.03	-0.04	-133.33
Manhattan Beach, City	37.32	63.36	26.04	41.10
Torrance Refining & Marketing Co.	119.06	315.01	195.95	62.20
Pacific Crest Cemetery Co.	18.23	28.25	10.02	35.47
Eco Services Operations	115.32	122.71	7.39	6.02
Roman Catholic Archbishop - WB	107.79	86.13	-21.66	-25.15
Shell Oil Co NCWUP	41.93	69.61	27.68	39.76
Southern California Edison Co. - WB	12.20	9.00	-3.20	-35.56
Tesoro Refining & Marketing Co., LLC	2,750.20	3,124.07	373.87	11.97
Torrance, City	2,117.58	605.22	-1512.36	-249.89
WRD	0.00	1,570.98	1570.98	100.00
Montrose Chemical Corp.	-0.84	0.21	1.05	500.00
Phillips 66 Co. - Alpha 7093	1,728.10	2,112.05	383.95	18.18
Rolling Hills Country Club	165.00	119.00	-46.00	-38.66

West Coast Basin: Lease Report

Watermaster Administrative Year 2021-22

Number of Leases: 3 (Flex: 3, No Flex: 0) : Volume: 3,183.50 acre-feet
Report Date: December 1, 2021

Party	Trasaction Type	Amount	Recordation Date		Party
California Water Service Co./Hawthorne Lease	Lease With Flex	1882.00	2/1/13	FROM	Hawthorne, City of
Hawthorne, City of	Lease With Flex	1882.00	2/1/13	TO	California Water Service Co./Hawthorne Lease
Hollywood Park Land Company, LLC	Lease With Flex	282.00	8/3/21	FROM	Inglewood, City of
Inglewood, City of	Lease With Flex	282.00	8/3/21	TO	Hollywood Park Land Company, LLC
Shell Oil Company	Lease With Flex	1019.50	10/17/17	TO	Tesoro Refining & Marketing Co., LLC
Tesoro Refining & Marketing Co., LLC	Lease With Flex	1019.50	10/17/17	FROM	Shell Oil Company

West Coast Basin Watermaster Invoices- Unpaid

2021-2022 Unpaid (as of 12/01/2021)

ID*	CUSTOMER NAME	WRP	WRD	TOTAL BILLED
7028	Automation Industries Inc.	\$ -	\$ 21.17	\$ 21.17
7048	CBS Inc.	\$ -	\$ 35.81	\$ 35.81
7070	Carson-Madrona Company #3 Del Amo	\$ -	\$ 193.11	\$ 193.11
7100	Curtis, Owen	\$ -	\$ 20.60	\$ 20.60
7110	Estate of Golda Delaney	\$ -	\$ 26.82	\$ 26.82
7201	Fujimoto, S R & S T & J K	\$ -	\$ 53.29	\$ 53.29
7220	Gillingham, Florence R, et al	\$ -	\$ 23.99	\$ 23.99
7380	Estate of Emma L. Leuzinger	\$ -	\$ 22.33	\$ 22.33
7400	Frank Lopes	\$ -	\$ 26.16	\$ 26.16
7501	McDonnell Douglas Corporation	\$ -	\$ 22.83	\$ 22.83
7563	Northrop Corporation	\$ -	\$ 83.50	\$ 83.50
7566	Nozaki, Sumikichi	\$ -	\$ 31.65	\$ 31.65
7700	Shell Oil Company	\$ -	\$ 1,716.97	\$ 1,716.97
7807	Tesoro Refining & Marketing Company LLC	\$ -	\$ 14,569.48	\$ 14,569.48
7920	Watson Land Company	\$ -	\$ 153.49	\$ 153.49
Totals		\$0.00	\$17,001.20	\$17,001.20

**A bolded ID indicates rights holders that have a past due balance from the previous Fiscal Years*

WATERMASTER SERVICE

IN THE WEST COAST BASIN - LOS ANGELES COUNTY

July 1, 2020 - June 30, 2021

December 2021



WEST COAST BASIN WATERMASTER

WEST COAST BASIN **WATER RIGHTS PANEL**

Prepared by the Administrative Body



DRAFT

This report is available at www.wrd.org

Printed copies are available.

Send requests to:

watermaster@wrđ.org

WATERMASTER SERVICE

IN THE WEST COAST BASIN
LOS ANGELES COUNTY

July 1, 2020 - June 30, 2021

December 2021

**WEST COAST BASIN
WATER RIGHTS PANEL**



Prepared by the
Water Replenishment District of Southern California (WRD)
West Coast Basin Administrative Body

for the
West Coast Basin Watermaster Water Rights Panel

Adopted on
December 7, 2021

Contents

Summary of Pertinent Data	1
Introduction	
A. Executive Summary	2
B. Background	2
Water Use	
A. Adjudicated Rights Extractions by Parties	4
B. Groundwater Storage Activity by Parties	4
C. Annual Extraction Limit and Over-extractions	5
D. Extractions of Contaminated Groundwater	5
E. Extractions by Non-Parties	5
F. Extraction Exemptions	6
G. Adjudicated Rights Transfers	6
H. Exchange Pool	7
I. Extraction Wells	7
J. Meter Testing Program	7
Water Supply	
A. Precipitation	9
B. Groundwater Recharge	9
C. In-Lieu Replenishment	10
D. Imported Water	10
E. Recycled Water	10
F. Total Water Use	10
G. Exported Water	11
H. Increased Extraction in the Basin for Certain Purveyors Serving Overlying Communities	11
I. Seawater Intrusion Barrier Projects	11
J. Groundwater Levels	11
Watermaster Costs and Budget	12

Tables

1	Water Rights Accounting	14
2	Storage Accounting	16
3	Water Put Into Storage	17
4	Water Extracted from Storage	17
5	Storage Transfers	17
6	Historical Storage Summary	18
7	Over-extractions	18
8	Non-Consumptive Water Use Permits	19
9	Extractions by Non-Parties	19
10	Leases	20
11	Permanent Transfers	21
12	Exchange Pool	22
13	Extraction Wells Completed	22
14	Extraction Wells Destroyed	22
15	Replenishment Operations	22
16	WRD In-Lieu Recharge	23
17	Imported Water Use	23
18	Recycled Water Use	24
19	Seawater Intrusion Barrier Project Operations	24
20	Apportionment of Budget Among Rights Holders	25

Figures

1	West Coast Basin (showing groundwater production)	27
2	Monthly Water Production (excludes non-consumptive use)	28
3	West Coast Basin (showing key wells and facilities)	29
4	Monthly Rainfall	30
5	Total Water Use	31
6	Water Level Hydrographs	32

Appendixes

A	Groundwater Extractions July 2020 - June 2021	33
B	Succession of Adjudicated Rights as of June 2021	40
C	Parties to the Amended Judgment as of June 2021	47
D	Erratum of West Coast Basin Watermaster Annual Report for July 1, 2019 - June 30, 2020	48

Governance

2020-2021 AY

West Coast Basin Administrative Body

Water Replenishment District

President

John D. S. Allen

Division 3

Vice-President

Sergio Calderon

Division 4

Secretary

Willard H. Murray, Jr

Division 1

Treasurer

Rob Katherman

Division 2

Director

Vera Robles DeWitt

Division 5

General Manager

Stephan Tucker

Storage Panel

Water Replenishment District

Board of Directors

West Coast Basin Water Rights Panel

West Coast Basin Water Rights Panel

Chair

Lou Vargas

City of Manhattan Beach

Vice-Chair

Katherine Nutting

Golden State Water Company

Treasurer

Chuck Schaich

City of Torrance

Charles Campbell

Torrance Refining Company

Ron Sorensen

California Water Service Company

Administrative Body Staff

Rob Beste

Esther Valle Rojas

Andrew Thomas

Tiffani Fong

Greg Osti

Josi Jenneskens

Summary of Pertinent Data

Item	Administrative Year 2019 - 2020	Administrative Year 2020 - 2021
Parties	69	69
Rights Holders	56	56
Active pumpers	36	36
Active nonparties	0	0
Adjudicated Rights (acre-feet)	64,468.25	64,468.25
Water put into Storage	2,258.90	1,127.70
Rainfall (inches)	14.02	4.72
Injection at barrier projects (acre-feet)	22,722	22,110
Watermaster Budget, total ¹	\$108,428	\$172,896
Adjudicated Rights Extractions (acre-feet) ²	27,603	31,890
Recycled water use by parties (acre-feet)	21,818	23,458
Imported water use by parties (acre-feet)	133,075	127,098
Exported water use by parties (acre-feet)	0	0
Total water use by parties (acre-feet)	182,496	182,446

¹ For the 2020-2021 AY, Water Rights Panel \$64,468.25, Administrative Body \$108,428.00.

² Excludes extractions by parties with non-consumptive water use permits and by non-parties.

Introduction

Executive Summary

This West Coast Basin Watermaster Annual Report, developed by the Administrative Body and adopted by the Water Rights Panel, summarizes information on groundwater extractions, storage accounts, use of imported water and recycled water, replenishment operations and the budget and finances of the West Coast Basin (Basin) Watermaster during the 2020-2021 administrative year (AY). This report complies with the provisions set forth in the West Basin Amended Judgment.

During the 2020-2021 AY, the Basin experienced an 16% increase in groundwater production when compared to the previous AY. Furthermore, zero imported water was purchased by the Water Replenishment District of Southern California (WRD) for spreading in the Montebello Forebay. The report is organized by three sections, including Water Use, Water Supply, and Watermaster Costs and Budget. In addition, the report provides various tables and figures describing the narrated information.

Background

The Basin underlies 160 square miles in the southwestern part of the coastal plain of Los Angeles County. Figure 1 shows the location and adjudicated boundaries of the Basin. The Basin is bounded on the west by the Santa Monica Bay, on the north by the Ballona Escarpment, on the east by the Newport-Inglewood Uplift, and on the south by the San Pedro Bay and the Palos Verdes Hills. Twenty incorporated cities and several unincorporated areas overlie the Basin.

An essential portion of the water needed by the residents and industries in the area overlying the Basin is pumped directly from groundwater stored in the Basins aquifers. In 1945, the intrusion of seawater caused by declining groundwater levels due to over pumping threatened the quality and quantity of the groundwater supply. In response to the seawater intrusion problem legal action was initiated halt the pumping overdraft and prevent further damage to the Basin. In 1955, the Superior Court of Los Angeles County (Court) appointed the Department of Water Resources (DWR) as the Watermaster to administer an Interim Agreement. Subsequently, in 1961, the Court retained the DWR as the Watermaster of the final West Coast Basin Adjudication (Judgment).

The Judgment has been amended multiple times since its inception. Noticeably, when the Judgment was amended on December 5, 2014 (Amended Judgment), for the first time, the Court allowed Parties to have direct input into how the Judgment is administered and enforced. Furthermore, the Amended Judgment confirmed the retirement of DWR as the Watermaster and established a new Watermaster structure.

The new Watermaster structure includes three separate constituent bodies serving different functions; 1) an Administrative Body, 2) a Water Rights Panel, and 3) a Storage Panel. The

Administrative Body performs the Watermaster accounting and reporting functions. The Water Replenishment District of Southern California (WRD) was appointed by the Court to fulfill this role. The Water Rights Panel enforces issues related to the pumping rights within the adjudications and is composed of five Basin adjudicated rights holders. The Storage Panel is comprised of the Water Rights Panel and the WRD Board of Directors, which together approve certain groundwater storage efforts.

The Watermaster assists the Court in the administration and enforcement of the provisions of the Judgment. Among other duties, the Watermaster monitors groundwater levels, extractions, storage, and reports significant water-related events.

DRAFT

Water Use

A. Adjudicated Extractions by Parties

The Judgment limits the amount of groundwater each Party with a water right may extract annually from the Basin. This limit is referred to as an “adjudicated right” or “AR”. The AR for each Party is listed in Table 1. Parties are required to report water extractions to the Administrative Body each month (or quarterly for small producers). Appendix A lists, by Party, the volume of groundwater extracted each month from each active well in the Basin. Figure 1 illustrates the variation of groundwater production by three distinct production classifications: less than 500 acre-feet per year (afy), 500 to 2,000 afy, and more than 2,000 afy, during the 2020-2021 AY. In addition, Figure 2 shows monthly water production (excluding non-consumptive use) for the 2020-2021 AY totaling 31,890 acre-feet (af), which is a 16% increase from the previous AY.

To provide flexibility in regard to groundwater extractions, the Judgment contains provisions, such as “carryover,” which allows each Party to carry over into the succeeding administrative year 100% of their unused AR plus or minus any leases with flex, if any. However, the amount of available carryover is reduced by the amount of Stored Water held by the Party. Yet, such reduction will not cause the amount of carryover to be less than 20% of a Party’s total adjudicated rights (including leases with flex). This type of provision is in-place to meet unforeseen water demands.

B. Groundwater Storage Activities by Parties

The Judgment permits Parties holding water rights to store water in the Basin for later recovery. Pursuant to Section V.3.(B) of the Judgment, parties can convert their carryover to storage upon payment of the Replenishment Assessment to WRD.

Table 2 describes storage accounting, specifically total carryover from the previous 2019-2020 AY, storage activity for the 2020-2021 AY (transfers, water put into storage, water extracted from storage, and balances), and total balance carryover into the ensuing AY. Table 3 lists total quantities of water put into storage during the 2020-2021 AY. The total amount of water that was put into storage was 1,127.70 af, which is a 50% decrease in comparison to the previous AY. There was no water extracted from storage during the 2020-2021 AY (Table 4).

The Judgment also provides for the transfer of stored water between Parties. However, there were no storage transfers in the 2020-2021 AY (Table 5).

Table 6 provides a historical storage summary from 2014-2015 to 2020-2021 AY for water put into storage, water extracted from storage, storage balance, and the available adjudicated storage capacity.

C. Total Extraction Right and Overextractions

Parties with water rights have a total extraction right, which is the maximum amount of groundwater that can be extracted in any one year. In the West Coast Basin, Parties with normal carryover and/or storage rights are allowed excess production (overextraction) of up to 120% of the sum of their AR +/- leased water. For example, if a Party has an AR of 1,000 af, 400 stored water rights, and leases an additional 200 af, their maximum yearly total extraction would be calculated as follows: $(1,000 + 200) \times 1.2 = 1,440$ af. Under certain circumstances, a Party may be allowed an overextraction in a greater amount; however, prior approval must be obtained from the West Coast Basin Storage Panel. Any overextraction will be deducted in the subsequent AY.

Parties with neither normal carryover nor storage rights can overextract 10% of their AR +/- leased water or 2 af, whichever is greater. Any Party that exceeds their allowed excess production without prior approval is in violation of the Judgment. When a Party overextracts and is in violation of the Judgment, Watermaster notifies the Party to resolve the over-extraction issue. Any overextraction will be deducted in the subsequent AY.

During the 2020-2021 AY, two Parties had a combined cumulative overextraction of 37.80 af. One Party overextracted within the provisions of the Judgment and the other, Mike Vukelich is in violation of the Judgment with a total overextraction of 31.08 af. Table 7 lists overextractions by Parties for the 2020-2021 AY.

D. Extractions of Contaminated Groundwater

A Party who is a water rights holder may petition the Administrative Body (WRD) for a Non-Consumptive Water Use Permit (NCWUP) as part of a project to remediate or ameliorate groundwater contamination. If the petition is granted, the Party may extract the groundwater without it counting against its production rights, so long as the conditions of the Judgment are met. A non-Party may extract contaminated groundwater for cleanup purposes by partnering with a Party who obtains the NCWUP and then assigns it to the non-Party. Table 8 lists current NCWUPs issued by WRD and the amounts of groundwater extracted under those permits.

In the 2020-2021 AY there were 828.03 af of non-consumptive water use extractions (the negative value represents a net re-injection of water produced). Appendix A reports these extractions by well and month.

E. Extractions by Non-Parties

In the 2020-2021 AY there were no extractions by non-Parties reported, not including NCWUPs (Table 9).

F. Extraction Exemptions

The Court approved an amendment to the Judgment during the 2018-2019 AY, which adds Section V.15, which allows for the extraction of non-potable groundwater by agencies with no AR. However, extractions of groundwater are only permitted if all of the following criteria are satisfied:

1. Only groundwater containing at least 500 milligrams/liter of chloride, as measured at the influent to any facility used to treat such water, may be extracted;
2. Extractions must be done by a public agency with statutory authority to clean contaminated groundwater;
3. Extractions of such groundwater must provide a “Regional Benefit” (as defined in Section II.27. of the Judgment) to the Basin as a whole and not just to the extracting party;
4. All extractions pursuant to the new Paragraph V.15 are subject to the payment of WRD’s Replenishment Assessment.

In addition, all new projects seeking an extraction exemption must be reviewed (as set forth in Section V.13 of the Judgment) and approved by the Water Rights Panel and WRD in its capacity as the Administrative Body. The Water Rights Panel and WRD must ensure that the project is technically feasible and will not cause material physical harm (as defined in Section II.21 of the Judgment) to the Basin. In addition, all approved extraction exemption projects must provide annual reporting in response to the required criteria.

During the 2020-2021 AY, there were no extraction exemption requests submitted. However, the WRD had a total production of 1,009.95 AF under the approved exemption received in 2018 for the Goldsworthy Desalter (Appendix A). In accordance with the terms of the exemption permit, the average chloride level at the influent remained above 500 milligrams/liter.

G. Adjudicated Rights Transfers

Each year, ARs are transferred between Parties through leases (temporary transfers) and change of ownership (permanent transfers) transactions. Table 10 shows transfers of AR through leases, specifically the Parties involved, transaction type (leases with and without flex), amount, and recordation date. During the 2020-2021 AY there were six leases that transferred a total of 3,500.50 af (all leases were with flex). Leases with flex transfer both the pumping right and associated carryover rights to the lessee for the term stated within the lease agreement.

In transferring water rights, Parties must specify (1) the type of right (i.e., adjudicated rights, normal carryover, or drought carryover), (2) the amount of right to the nearest 0.01 af, and (3) the period of the lease, if applicable. Moreover, all leases must be made on an AY basis and must be executed by the Parties and received by the Administrative Body no later than one month and 15 days following the end of the AY in which the lease is effective.

The permanent transfer of water rights must be documented accordingly. Specifically, when land is sold on which a water right has been developed, the Administrative Body must receive a copy of the transfer document if the water right is also transferred. Water rights do not automatically pass to the new landowner unless the transfer document specifies the transfer of water rights and the exact amount of the water right that was transferred with the land. Watermaster maintains a template for a Deed of Water Rights – Permanent Transfer transaction on its website to ensure the information provided on the transfer document is sufficient. There were no permanent transfers in the 2020-2021 AY (Table 11).

There were 69 Parties and 56 rights holders to the Judgment in the 2020-2021 AY; right holders did not change since the previous AY. Appendix B shows the succession of ARs in the Basin and current Parties to the Judgment are listed in Appendix C.

H. Exchange Pool

The Judgment authorizes an Exchange Pool to provide additional water rights to Parties without sufficient water. If a Party's estimated water requirement for the following fiscal year exceeds its total available water supply, that Party may purchase additional water from the Exchange Pool. There were no requests for Exchange Pool water during the 2020-2021 AY (Table 12).

I. Extraction Wells

In the 2020-2021 AY, there were 74 reported extraction wells operating in the Basin, which is an increase of 2 active wells from the previous AY. The locations of the extraction wells are shown on Figure 1 by three distinct production classifications. Furthermore, according to information provided to Watermaster, there was 1 new extraction well completed (Table 13) and no extraction wells destroyed in 2020-2021 AY (Table 14).

J. Meter Testing Program

Accurate measurement of groundwater extractions is essential for the successful management of groundwater in the Basin. Therefore, Watermaster requires an operative water meter to be installed at each extraction well. It is the responsibility of each Party to ensure that its meter and test facilities are installed properly and are maintained in good working condition. It is the goal of Watermaster to test the water meter at each active extraction well at least once every two years or when a Party requests a meter calibration. Watermaster tests meters by volumetric or pitot tube comparisons or other methods, as appropriate. Watermaster notifies a Party that it must repair or replace its meter when the meter registers beyond five percent accuracy. If the registration accuracy of the meter deviates by more than five percent, Watermaster may revise the well production amount.

The meter testing program is managed by the Water Rights Panel who has contracted with DWR to complete testing. During the 2020-2021 AY, the DWR visited 19 Parties and performed 39 tests. Tests showed that six meters did not pass, which means the meters were either more than five percent fast or slow. Please contact the Water Rights Panel for specific information regarding meter testing; contact information is available at www.wrd.org/WBWRP.

This page was left intentionally blank.

Water Supply

A. Precipitation

Precipitation over the Basin has relatively minimal direct influence on the replenishment of the groundwater Basin. This is a result of the low soil permeability that characterizes much of the Basin and large impermeable surfaces (i.e. pavement and buildings). However, during years of high rainfall, increased runoff from the areas upstream of the Basin can result in increased replenishment to the Basin and decreased groundwater demand by the water users, which can result in lower rates of groundwater extraction from the Basin.

During the 2020-2021 AY, the following amounts of rainfall were measured at three precipitation stations:

- 5.00 inches at Los Angeles International Airport
- 4.49 inches at Long Beach Airport
- 4.66 inches at Torrance Airport

Figure 3 shows the location of the precipitation stations and other key facilities and Figure 4 shows the monthly average rainfall measured at all three stations. Based on the total rainfall measured at these stations, the mean precipitation over the West Coast Basin was 4.72 inches, which is 42% of the long-term mean of 11.21 inches (Figure 4). The long-term mean precipitation for 2020-2021 AY compared to the previous AY decreased by 1.42 inches.

B. Groundwater Recharge

Replenishment of the Basin occurs primarily by injection of imported and recycled water into the West Coast and Dominguez Gap Seawater intrusion barriers located along the coast, and underflow from the Central Basin to the east and Santa Monica Basin to the north. As mentioned above, minimal rainfall over the Basin infiltrates into deeper aquifers of the Basin.

Water spread in the Central Basin percolates into the aquifers and, eventually, some groundwater crosses the Newport-Inglewood Uplift to replenish the groundwater in the West Coast Basin. Although the recharge water is not directly applied to the West Coast Basin, this recharge process returns large quantities of water to the Basin by substantially increasing the natural subsurface flow from the Central Basin to the West Coast Basin. There was a decrease of 31% in “local runoff” when compared to the previous AY, which is credited to the less-than-average rainfall received compared to the previous wet year. Table 15 shows the sources and quantities of water replenished in the Montebello Forebay area of the Central Basin for the 2019-2020 AY and the 2020-2021 AY. Specifically, for the second consecutive year, WRD purchased zero af of imported water for spreading in the Montebellow Forebay.

Water injected in the seawater intrusion barrier projects also contributes significantly to the replenishment of the Basin (see Section I, Seawater Intrusion Barrier Projects).

C. In-Lieu Replenishment

During the 1965-1966 water year, WRD, in cooperation with the MWD, began an in-lieu replenishment program, where discounted imported water was offered seasonally due to availability. WRD contracted with producers having access to supplemental imported water that could be used in lieu of extracting groundwater from the Basin to reduce overall pumping impacts. However, due to water shortages and other reasons, MWD discontinued their discounted seasonal imported water in 2011 and as a result, WRD generally suspended its in-lieu replenishment program except under special circumstances. There was no in-lieu recharge in 2020-2021 AY (Table 16).

D. Imported Water

Imported water has been the largest component of supply for the Basin since the mid-1950s. Water is imported from northern California via the State Water Project and the Colorado River and is made available to water users by MWD through its member agencies: City of Long Beach, West Coast Basin Municipal Water District, City of Torrance, and the City of Los Angeles. Table 17 lists imported water for direct use by sources of water, Party, and quantity (WRD replenishment water is not included in the table). During the 2020-2021 AY, a total of 127,098 af of water was imported.

E. Recycled Water

Table 18 shows that 23,458 af of recycled water was used in the area overlying the Basin during the 2020-2021 AY, not including WRD replenishment water. This amount is 1,640 af or 7.52% more than was used in the previous AY.

F. Total Water Use

Figure 5 shows the total water use in the Basin during the 2020-2021 AY, including extracted groundwater, imported water and recycled water for direct use.

G. Exported Water

No groundwater was exported from the Basin. California Water Service Company exported purchased imported water from the Basin to portions of its service area in the Palos Verdes Hills.

H. Increased Extraction in the Central Basin for Certain Purveyors Serving Overlying Communities

Per Section IV.K of the Central Basin Third Amended Judgment, “certain purveyors” are Parties to both the Central Basin Third Amended Judgment and West Coast Basin Judgment and serve communities overlying both the Central and West Coast Basins. These purveyors include the City of Los Angeles, Golden State Water Company, and California Water Service Company and are allowed to increase their extraction in the Central Basin beyond their Allowed Pumping Allocation, which is the amount of groundwater each Party may extract annually. However, the increased extraction is counted against their AR in the West Coast Basin. Increased extractions are limited to 5,000 af per AY.

In the 2020-2021 AY, the Golden State Water Company transferred 1,330 af of their rights from the West Coast Basin into the Central Basin. The 1,330 af was deducted from their unused West Coast Basin AR. This transfer of rights is reflected in Table 1, specifically deducted from the “Total Rights” column.

I. Seawater Intrusion Barrier Projects

The Los Angeles County Department of Public Works operates two barrier projects, the West Coast Basin Barrier and the Dominguez Gap Barrier, within the Basin. The barriers are designed to prevent seawater intrusion into the freshwater aquifers of the Basin. Table 19 shows the quantities of imported and recycled water injected into the two barrier projects. In the 2020-2021 AY, 22,110 af of water were injected into these two barrier systems, which is a 3% decrease from the previous AY. The location of the two barriers systems are illustrated in Figure 3.

J. Groundwater Levels

Figure 3 shows the location and water level elevations in the key wells located in the Basin. Figure 6 shows the water level elevations at the those key wells. More detailed information regarding groundwater levels in the Basin is provided in the WRD’s annual Engineering Survey and Report and Regional Groundwater Monitoring Report. These reports are available on WRD’s website.

Watermaster Costs and Budget

To fund Watermaster activities, both the Administrative Body and the Water Rights Panel can levy an annual assessment on water rights holders under the terms of the Judgment. The Administrative Body charges a flat fee of twenty dollars (\$20) to each rights holder. In addition, the remaining amount of the Administrative Body budget is charged to rights holders based upon their proportional ownership of total AR. The Water Rights Panel assessment is charged to all water rights holders.

For the 2020-2021 AY, the Water Rights Panel rate was one dollar (\$1.00) per acre-foot of adjudicated rights. The Panel waived their assessment in the previous AY, but reimplemented the assessment this AY. The total Watermaster budget for 2020-2021 was \$172,896. This amount consists of the Water Rights Panel budget for \$64,468.25 and the Administrative Body budget of \$108,428.00, which is unchanged from the previous AY. A summary of the 2020-2021 budget is provided in Table 20.

This page was left intentionally blank.

Table 1 - Water Rights Accounting (acre-feet)

Party	AR 2020-2021 ¹	Net Carryover ² from 2019-2020	Leases ³		Storage ⁴	Increased Extractions ⁵	Total Rights ⁶	Amount Pumped ⁷	Balance ⁸	Allowable carryover into 2021-2022	
			with Flex	w/o Flex						Drought ⁹	Normal
ABC Nursery	24.10	24.10	0.00	0.00	0.00		48.20	9.00	39.20	0.00	24.10
Asahi Fancy Koi	2.00	34.20	0.00	0.00	0.00		36.20	0.00	36.20	32.20	2.00
Automation Industries	0.70	4.10	0.00	0.00	0.00		4.80	0.00	4.80	3.40	0.70
Cal. Water Service Co.	4,070.00	3,930.00	-20.00	0.00	0.00		7,980.00	1,120.40	6,859.60	0.00	4,050.00
Cal. Water Service Co. Dominguez	10,417.45	10,417.45	0.00	0.00	0.00		20,834.90	2,516.60	18,318.30	0.00	10,417.45
Cal. Water Service Co./Hawthorne Lease	0.00	1,882.00	1,882.00	0.00	0.00		3,764.00	585.82	3,178.18	0.00	1,882.00
Carson-Harbor Village Mobile Home Park	7.00	7.00	0.00	0.00	0.00		14.00	0.00	14.00	0.00	7.00
Carson-Madrona Co.	104.00	104.00	0.00	0.00	0.00		208.00	0.00	208.00	0.00	104.00
CBS, Inc.	9.50	9.50	0.00	0.00	0.00		19.00	0.00	19.00	0.00	9.50
Century Builders	4.70	4.70	0.00	0.00	0.00		9.40	0.00	9.40	0.00	4.70
Chandler Palos Verdes Sand & Gravel Company	4.20	4.20	0.00	0.00	0.00		8.40	0.00	8.40	0.00	4.20
Chevron USA	4,601.30	4,601.30	0.00	0.00	0.00		9,202.60	0.00	9,202.60	0.00	4,601.30
Coastline Church of Christ	0.70	4.10	0.00	0.00	0.00		4.80	0.00	4.80	3.40	0.70
Curtis, Owen W	0.36	3.08	0.00	0.00	0.00		3.44	0.00	3.44	2.72	0.36
Delaney, Golda Estate of	4.10	14.30	0.00	0.00	0.00		18.40	0.00	18.40	10.20	4.10
Eco Services Operations	521.00	338.32	0.00	0.00	0.00		859.32	344.73	514.59	0.00	514.59
El Segundo, City	953.00	953.00	0.00	0.00	0.00		1,906.00	0.00	1,906.00	0.00	953.00
Engelsma, Susan Trust	12.10	12.10	0.00	0.00	0.00		24.20	0.00	24.20	0.00	12.10
Evergreen America Corp.	5.40	5.40	0.00	0.00	0.00		10.80	0.00	10.80	0.00	5.40
Fujimoto, SR. & St & JK	20.00	32.28	0.00	0.00	0.00		52.28	0.00	52.28	12.28	20.00
Gillingham, Florence R	2.40	2.40	0.00	0.00	0.00		4.80	0.00	4.80	0.00	2.40
Golden State Water Co.	7,502.24	1,205.63	0.00	0.00	3,300.00	-1,330.00	10,677.87	4,877.72	5,800.15	3.39	2,496.76
Hawthorne, City	1,882.00	0.00	-1,882.00	0.00	0.00		0.00	0.00	0.00	0.00	0.00
Hillside Memorial Park ¹¹	104.10	8.33	0.00	0.00	0.00		112.43	119.15	-6.72	0.00	-6.72
Hollywood Park Land Co.	282.00	0.00	-282.00	0.00	0.00		0.00	0.00	0.00	0.00	0.00
Honeywell International	22.50	22.50	0.00	0.00	0.00		45.00	0.00	45.00	0.00	22.50
Honold, Kristin Brandsma	11.80	11.80	0.00	0.00	0.00		23.60	0.00	23.60	0.00	11.80
Inglewood Park Cemetery	0.00	35.00	0.00	0.00	0.00		35.00	0.00	35.00	35.00	0.00
Inglewood, City	4,449.89	4,731.89	282.00	0.00	0.00		9,463.78	2,796.62	6,667.16	0.00	4,731.89
Kinder Morgan Liquids Terminals	167.00	167.00	0.00	0.00	0.00		334.00	44.11	289.89	0.00	167.00
L.A. County Department of Parks & Rec	363.70	-47.53	97.00	0.00	0.00		413.17	396.32	16.85	0.00	16.85
L.A. County Sanitation Districts-JWPCP	102.00	102.00	0.00	0.00	0.00		204.00	0.00	204.00	0.00	102.00
Leuzinger, Emma L Estate of	1.40	5.90	0.00	0.00	0.00		7.30	0.00	7.30	4.50	1.40
Lomita, City	1,352.00	1,202.00	-297.00	0.00	0.00		2,257.00	0.07	2,256.93	0.00	1,055.00
Long Beach, City	0.70	0.70	0.00	0.00	0.00		1.40	0.00	1.40	0.00	0.70
Lopes, Frank	3.70	13.10	0.00	0.00	0.00		16.80	0.00	16.80	9.40	3.70
Los Angeles, City	1,503.00	1,503.00	0.00	0.00	0.00		3,006.00	0.00	3,006.00	0.00	1,503.00
Loyola Marymount University	48.10	48.10	0.00	0.00	0.00		96.20	0.00	96.20	0.00	48.10
Manhattan Beach, City	1,131.20	226.24	0.00	0.00	2,262.40		3,619.84	51.10	3,568.74	0.00	226.24
McDonnell Douglas Corp.	1.70	1.70	0.00	0.00	0.00		3.40	0.00	3.40	0.00	1.70
Montrose Chemical Corp.	1.20	1.20	0.00	0.00	0.00		2.40	0.00	2.40	0.00	1.20

Table 1 - Water Rights Accounting Continued

Party	AR 2020-2021 ¹	Net Carryover ² from 2019-2020	Leases ³		Storage ⁴	Increased Extractions ⁵	Total Rights ⁶	Amount Pumped ⁷	Balance ⁸	Allowable carryover into 2021-2022		
			with Flex	w/o Flex						Drought ⁹	Normal	Total
Mori, Roy H and Kenji	3.60	12.80	0.00	0.00	0.00		16.40	0.00	16.40	9.20	3.60	12.80
Northrop Corp.	38.15	38.15	0.00	0.00	0.00		76.30	0.00	76.30	0.00	38.15	38.15
Nozaki, Sumikichi	7.00	7.00	0.00	0.00	0.00		14.00	0.00	14.00	0.00	7.00	7.00
Ocean Industries	0.10	0.10	0.00	0.00	0.00		0.20	0.00	0.20	0.00	0.10	0.10
Pacific Crest Cemetery Co.	39.40	-7.99	20.00	0.00	0.00		51.41	46.26	5.15	0.00	5.15	5.15
Palos Verdes Begonia Farm	0.00	7.40	0.00	0.00	0.00		7.40	0.00	7.40	7.40	0.00	7.40
Phillips 66 Co.	6,170.00	6,957.78	0.00	0.00	0.00		13,127.78	5,202.68	7,925.10	787.78	6,170.00	6,957.78
Rehor, Josephine P	2.20	2.20	0.00	0.00	0.00		4.40	0.00	4.40	0.00	2.20	2.20
Rolling Hills Country Club	290.00	234.00	0.00	0.00	0.00		524.00	348.00	176.00	0.00	176.00	176.00
Roman Catholic Archbishop	72.30	156.71	200.00	0.00	0.00		429.01	232.82	196.19	0.00	196.19	196.19
Shell Oil Company	1,019.50	0.00	-1,019.50	0.00	0.00		0.00	0.00	0.00	0.00	0.00	0.00
Southern California Edison Co.	57.10	63.32	0.00	0.00	0.00		120.42	27.20	93.22	6.22	57.10	63.32
Tesoro Refining & Marketing Co., LLC	8,741.00	9,760.50	1,019.50	0.00	0.00		19,521.00	7,884.90	11,636.10	0.00	9,760.50	9,760.50
Torrance Refining & Marketing Co.	2,596.40	2,626.83	0.00	0.00	0.00		5,223.23	917.04	4,306.19	30.43	2,596.40	2,626.83
Torrance, City ¹⁰	5,638.86	0.07	0.00	0.00	10,149.50		15,788.43	4,369.20	11,419.23	0.00	1,127.77	1,127.77
Vukelich, Mike ¹¹	10.00	-41.08	0.00	0.00	0.00		-31.08	0.00	-31.08	0.00	-31.08	-31.08
Watson Land Co.	80.20	80.20	0.00	0.00	0.00		160.40	0.00	160.40	0.00	80.20	80.20
Wiseburn School Dist.	8.20	8.20	0.00	0.00	0.00		16.40	0.00	16.40	0.00	8.20	8.20
TOTAL:	64,468.25	51,532.28	0.00	0.00	15,711.90	-1,330.00	130,382.43	31,889.74	98,492.69	957.52	53,200.20	54,157.72

¹ AR - Adjudicated Rights.

² Net Carryover is the sum of all carryover (drought and normal) from the previous year (AY 2019-20) less the amount of carryover conversion for the current year (AY 2020-21).

See Table 3 for carryover conversion (water put into storage) per party for AY 2020-21.

³ See Table 10 for information concerning leases. Lease with flex include carryover provisions.

⁴ Storage includes storage withdrawals and carryover conversions for AY 2020-21. See Tables 2 through 4, for a summary of all Storage Accounting per party for AY 2020-21.

⁵ Increased Extraction: Section IV(K) of the Central Basin Judgment permits increased extraction rights through use of up to 5,000 AF of certain parties' West Basin Rights in the Central Basin

The aforementioned parties include City of Los Angeles, Golden State Water Company, and California Water Service Company."

⁶ Total Extraction Right = Adjudicated Rights + Net Carryover + Leases + Storage + Increased Extraction.

⁷ Amount pumped does not include storage withdrawals (Table 4), which totaled 0 af for AY 2020-21.

⁸ Balance = Total Extraction Right - Amount Pumped

⁹ Drought = drought carryover created in 1991.

¹⁰ 2019-2020 net carryover reduced by 1,127.70 a.f. due to carryover conversion into storage for 2020-2021.

¹¹ Negative Normal Carryover will be deducted from the subsequent year's AR

Table 2 - Storage Accounting

Party	Carryover from 2019-2020		2020-2021 Storage Activity										
			Transfers		Water Extracted		Water put into Storage		Balance				
	ISA ¹	CSP ²	ISA	CSP	ISA	CSP	ISA	CSP	ISA	CSP	ISA	CSP	Total
Golden State Water Company	3,000.90	299.10	-	-	-	-	-	-	-	-	3,000.90	299.10	3,300.00
Manhattan Beach, City of	452.48	1,809.92	-	-	-	-	-	-	-	-	452.48	1,809.92	2,262.40
Torrance, City of	2,255.54	6,766.26	-	-	-	-	-	-	-	1,127.70	2,255.54	7,893.96	10,149.50
Central Basin Total	5,708.92	8,875.28	-	-	-	-	-	-	-	1,127.70	5,708.92	10,002.98	15,711.90

¹ Individual Storage Account.

² Community Storage Pool.

Table 3 - Water Put Into Storage

Party	Total Quantity (acre-feet)	ISA ¹	CSP ²	Storage Method ³	Date
Torrance, City of	1,127.70	-	1,127.70	CC	7/1/21
Total:	1,127.70				

Table 4 - Water Extracted From Storage

Party	Quantity(acre-feet)	Storage Account	Date
No stored water was extracted in the 2020 - 2021 AY			

Table 5 - Storage Transfers

Party	Quantity (acre-feet)	Storage Account	Date
No stored water was transferred in the 2020 - 2021 AY			

¹ CSP = Community Storage Pool. ISA = Individual Storage Account.

² CC = Carryover Conversion.

Table 6 - Historical Storage Summary

Year	Water Put Into Storage			Water Extracted From Storage			Storage Balance			Available Adjudicated Storage Capacity		
	ISA	CSP	Total	ISA	CSP	Total	ISA	CSP	Total	ISA	CSP	Total
2014-15	1,097.77	0.00	1,097.77	0.00	0.00	0.00	1,097.77	0.00	1,097.77	24,702.23	35,500.00	60,202.23
2015-16	1,157.77	1,917.16	3,074.93	0.00	0.00	0.00	2,255.54	1,917.16	4,172.70	23,544.46	33,582.84	57,127.30
2016-17	3,000.90	1,765.10	4,766.00	0.00	0.00	0.00	5,256.44	3,682.26	8,938.70	20,543.56	31,817.74	52,361.30
2017-18	452.48	2,756.42	3,208.90	0.00	0.00	0.00	5,708.92	6,438.68	12,147.60	20,091.08	29,061.32	49,152.40
2018-19	0.00	1,127.70	1,127.70	0.00	0.00	0.00	5,708.92	7,566.38	13,275.30	20,091.08	27,933.62	48,024.70
2019-20	0.00	1,308.90	1,308.90	0.00	0.00	0.00	5,708.92	8,875.28	14,584.20	20,091.08	26,624.72	46,715.80
2020-21	0.00	1,127.70	1,127.70	0.00	0.00	0.00	5,708.92	10,002.98	15,711.90	20,091.08	25,497.02	45,588.10

Table 7. Over-extractions

Party	APA	Carryover and/or Stored Water	Total Rights	Amount Pumped	Overextraction ¹	Allowable Overextraction ²	Judgment Violation?
Hillside Memorial Park	104.10	No	112.43	119.15	6.72	12.49	No
Vukelich, Mike	10.00	No	-31.08	0.00	31.08	20.00	Yes
Total:					37.80		

¹ Over-extraction = Amount Pumped - Total Rights; any over-extraction will be deducted from the following year's Total Rights.

² If the Party has carryover or stored water, they are allowed to over-extract up to 120% of AR +/- leases and not be in violation of the Judgment; if they do not have carryover and/or stored water, they are allowed to over-extract 10% or 2 af of AR +/- leases, whichever is greater.

Table 8 - Non-Consumptive Water Use Permits

Party	Issued	Expired	2020-2021 Extraction ¹
Montrose Chemical Corporation	November 07, 2012	October 31, 2062	-1.30
West Basin Brewer Desalter	July 22, 1992	June 30, 2017	686.12
Shell Oil	December 28, 2011	Pending Renewal	143.21
Total			828.03

Table 9. Extractions by Non-Parties

Non-Party	Amount Pumped (acre-feet)
There were no extractions by non-parties in 2020-2021	
	0.00

¹ Negative numbers indicate net re-injection of treated water.

² Permit in process of renewal.

Table 10 - Leases (acre-feet)

Party	Transaction Type	Amount	Recordation Date	Party	Net Amount
California Water Service Co./Hawthorne Lease	Lease with flex	1,882.00	02/01/13	Hawthorne, City of	1,882.00
California Water Service Company	Lease with flex	-20.00	08/11/20	Pacific Crest Cemetery Company	-20.00
Hawthorne, City of	Lease with flex	-1,882.00	02/01/13	California Water Service Co./Hawthorne Lease	-1,882.00
Hollywood Park Land Company, LLC	Lease with flex	-282.00	07/23/20	Inglewood, City of	-282.00
Inglewood, City of	Lease with flex	282.00	07/23/20	Hollywood Park Land Company, LLC	282.00
Lomita, City of	Lease with flex	-200.00	06/28/21	Roman Catholic Archbishop of Los Angeles	-297.00
Lomita, City of	Lease with flex	-97.00	07/13/21	Los Angeles County Department of Parks & Rec	
Los Angeles County Department of Parks & Rec	Lease with flex	97.00	07/13/21	Lomita, City of	97.00
Pacific Crest Cemetery Company	Lease with flex	20.00	08/11/20	California Water Service Company	20.00
Roman Catholic Archbishop of Los Angeles	Lease with flex	200.00	06/28/21	Lomita, City of	200.00
Shell Oil Company	Lease with flex	-1,019.50	10/17/21	Tesoro Refining & Marketing Co., LLC	-1,019.50
Tesoro Refining & Marketing Co., LLC	Lease with flex	1,019.50	10/17/21	Shell Oil Company	1,019.50
Total Leased Volume (a.f.)		3,500.50			

¹ Leases with flexibility or "flex" transfers both the pumping right and associated carryover rights to the lessee, meaning if the party who leases in the rights "with flex" is allowed to carryover into the next AY any unused rights from the lease under the terms of the Judgment.

Table 11 - Permanent Transfers (acre-feet)

Party	Transaction Type	Amount	Recordation Date	Party	Net Amount
There were no permanent transfers in the West Coast Basin in the 2020-2021 AY					
Total Change of Ownership		0.00			

Table 12 - Exchange Pool

Party	APA (acre-feet)	Required Offer (acre-feet)	Actual Offer (acre-feet)	Amount Sold (acre-feet)	Payment Due Exchanger
There were no requests for the Exchange Pool Program in the 2020 - 2021 AY.					

Table 13 - Extraction Wells Completed

Party	Recordation No.	State Well No.	Owner Designation
Tesoro Refining & Marketing Company	1950644	4S/13W-16R03S	Well 17

Table 14 - Extraction Wells Destroyed

Party	Recordation No.	State Well No.	Owner Designation
There were no extraction wells reported destroyed in the 2020-2021 AY.			

Table 15 - Replenishment Operations

Water spread in the Montebello Forebay area of the Central Basin provides subsurface recharge to the West Coast Basin.

Source of Water	Quantity (acre-feet)	
	2019 - 2020	2020 - 2021
Local Runoff	35,447	24,399
Recycled Water:		
Whittier Narrows Water Reclamation Plant	8,413	7,687
San Jose Water Reclamation Plant	36,391	34,653
Pomona Water Reclamation Plant	3,409	2,240
MWD untreated Tier 1 water purchaed by WRD	0	0
Make-up water from Upper San Gabriel Basin	0	0
Total	83,660	68,979

Table 16 - WRD In-Lieu Recharge

Party	In-Lieu Amount (acre-feet)
There was no in-lieu recharge in the 2020 - 2021 AY.	
Total	

Table 17 - Imported Water Use

Source of Water	Party/Entity	Quantity (acre-feet)	
		2019 - 2020	2020 - 2021
State Water Project Colorado River	Long Beach, City of	23,646	19,660
Colorado River and State Water Project	West Coast Basin Municipal Water District:		
	California American Water Company	1,696	1,004
	California Water Service Company ¹	10,697	10,056
	California Water Service Company (Dominguez)	23,436	22,037
	California Water Service Company (Hawthorne Lease)	3,202	3,172
	El Segundo, City of	6,302	5,535
	Golden State Water Company	18,495	16,628
	Inglewood, City of	5,520	6,195
	Lomita, City of	2,004	2,093
	Manhattan Beach, City of	4,603	4,858
	West Basin MWD Subtotal	75,955	71,578
Colorado River and State Water Project	Torrance, City of	4,292	4,369
Owens River-Mono Basin, Colorado River, and State Water Project	Los Angeles, City of	28,060	29,471
Central Basin Groundwater	California-American Water Company	1,122	2,020
Total Imported Water		133,075	127,098

¹ Excludes acre-feet of imported water that was exported to Palos Verdes.

² This value is the same as the imported water use in the Central Basin.

Table 18 - Recycled Water Use

Source of Water	Party/Entity	Quantity (acre-feet) ¹	
		2019 - 2020	2020 - 2021
West Basin Municipal Water District:	California Water Service Company	215	224
	California Water Service Company (Hawthorne Lease)	92	101
	California Water Service Company (Dominguez)	4,667	5,182
	El Segundo, City of	8,651	9,417
	Golden State Water Company	385	495
	Inglewood, City of	685	899
	Los Angeles, City of	1,433	1,416
	Manhattan Beach, City of	266	276
	Torrance, City of	5,424	5,447
Total Recycled Water		21,818	23,458

Table 19 - Seawater Intrusion Barrier Project Operations

Provisional data provided by the Los Angeles County Department of Public Works.

Barrier Project	Quantity (acre-feet)	
	2019 - 2020	2020 - 2021
West Coast Basin Barrier		
Imported Water Injection	2,270	1,556
Recycled Water Injection	13,084	10,995
Dominguez Gap Barrier		
Imported Water Injection	4,185	5,049
Recycled Water Injection	3,183	4,510
TOTAL	22,722	22,110

Table 20 - Apportionment of Budget Among Rights Holders (2020-2021)

Party	APA (acre-feet)	Water Rights Panel	Administrative Body	Total Amount Billed
A B C Nursery Inc.	24.10	\$24.10	\$60.11	\$84.21
Honeywell International Inc.	22.50	\$22.50	\$57.45	\$79.95
Aqua Capital Management LP	0.00	\$0.00	\$0.00	\$0.00
Asahi Fancy Koi Inc.	2.00	\$2.00	\$23.33	\$25.33
Automation Industries Inc.	0.70	\$0.70	\$21.17	\$21.87
CBS Inc.	9.50	\$9.50	\$35.81	\$45.31
California Water Service Company -	4,070.00	\$4,070.00	\$6,794.55	\$10,864.55
California Water Service Company -	10,417.45	\$10,417.45	\$17,359.94	\$27,777.39
Carson Harbor Village Mobile Home Park	7.00	\$7.00	\$31.65	\$38.65
Carson-Madrona Company #3 Del Amo	104.00	\$104.00	\$193.11	\$297.11
Century Builders	4.70	\$4.70	\$27.82	\$32.52
Chandler Palos Verdes Sand & Gravel	4.20	\$4.20	\$26.99	\$31.19
Chevron U.S.A. Inc.	4,601.30	\$4,601.30	\$7,678.91	\$12,280.21
Coastline Church of Christ	0.70	\$0.70	\$21.17	\$21.87
Phillips 66 Company	6,170.00	\$6,170.00	\$10,290.02	\$16,460.02
Curtis, Owen	0.36	\$0.36	\$20.60	\$20.96
Estate of Golda Delaney	4.10	\$4.10	\$26.82	\$30.92
El Segundo, City of	953.00	\$953.00	\$1,606.28	\$2,559.28
Susan Engelsma Trust	12.10	\$12.10	\$40.14	\$52.24
Evergreen America Corporation	5.40	\$5.40	\$28.99	\$34.39
Fujimoto, S R & S T & J K	20.00	\$20.00	\$53.29	\$73.29
Gillingham, Florence R, et al	2.40	\$2.40	\$23.99	\$26.39
Golden State Water Company	7,502.24	\$7,502.24	\$12,507.55	\$20,009.79
Hawthorne, City of (California Water	1,882.00	\$1,882.00	\$3,152.61	\$5,034.61
Hillside Memorial Park	104.10	\$104.10	\$193.28	\$297.38
Hollywood Park Land Company, LLC	282.00	\$282.00	\$489.39	\$771.39
Honold, Kristin Brandsma	11.80	\$11.80	\$39.64	\$51.44
Inglewood, City of	4,449.89	\$4,449.89	\$7,426.88	\$11,876.77
Kinder Morgan Liquids Terminals, LLC	167.00	\$167.00	\$297.97	\$464.97
Estate of Emma L. Leuzinger	1.40	\$1.40	\$22.33	\$23.73
Long Beach, City of	0.70	\$0.70	\$21.17	\$21.87
Frank Lopes	3.70	\$3.70	\$26.16	\$29.86
Los Angeles Department of Water and	1,503.00	\$1,503.00	\$2,521.76	\$4,024.76
Los Angeles County Recreation Facilities	363.70	\$363.70	\$625.38	\$989.08
Los Angeles County Sanitation District No. 2	102.00	\$102.00	\$189.78	\$291.78
Lomita Water System, City of	1,352.00	\$1,352.00	\$2,270.42	\$3,622.42
Loyola Marymount University	48.10	\$48.10	\$100.06	\$148.16
Manhattan Beach, City of	1,131.20	\$1,131.20	\$1,902.89	\$3,034.09
McDonnell Douglas Corporation	1.70	\$1.70	\$22.83	\$24.53
Torrance Refining Company	2,596.40	\$2,596.40	\$4,341.73	\$6,938.13
Montrose Chemical Corporation of	1.20	\$1.20	\$22.00	\$23.20
Roy H. and Kenji Mori	3.60	\$3.60	\$25.99	\$29.59
Northrop Corporation	38.15	\$38.15	\$83.50	\$121.65
Nozaki, Sumikichi	7.00	\$7.00	\$31.65	\$38.65

Table 20 - Apportionment of Budget Among Rights Holders (Continued)

Party	APA (acre-feet)	Water Rights Panel	Administrative Body	Total Amount Billed
Pacific Crest Cemetery Company	39.40	\$39.40	\$85.58	\$124.98
Josephine P. Rehor	2.20	\$2.20	\$23.66	\$25.86
Eco Services Operations LLC	521.00	\$521.00	\$887.21	\$1,408.21
Rolling Hills Country Club	290.00	\$290.00	\$502.71	\$792.71
Roman Catholic Archbishop of Los Angeles	72.30	\$72.30	\$140.34	\$212.64
Shell Oil Company	1,019.50	\$1,019.50	\$1,716.97	\$2,736.47
Southern California Edison Company	57.10	\$57.10	\$115.04	\$172.14
Tesoro Refining & Marketing Company LLC	8,741.00	\$8,741.00	\$14,569.48	\$23,310.48
Torrance, City of	5,638.86	\$5,638.86	\$9,405.93	\$15,044.79
Vukelich, Mike, Jr.	10.00	\$10.00	\$36.65	\$46.65
Watson Land Company	80.20	\$80.20	\$153.49	\$233.69
Ocean Industries, Inc.	0.10	\$0.10	\$20.17	\$20.27
Wiseburn School District	8.20	\$8.20	\$33.65	\$41.85
Total	64,468.25	\$64,468.25	\$108,428.00	\$172,896.25

Figure 1 - West Coast Basin
(showing groundwater production)

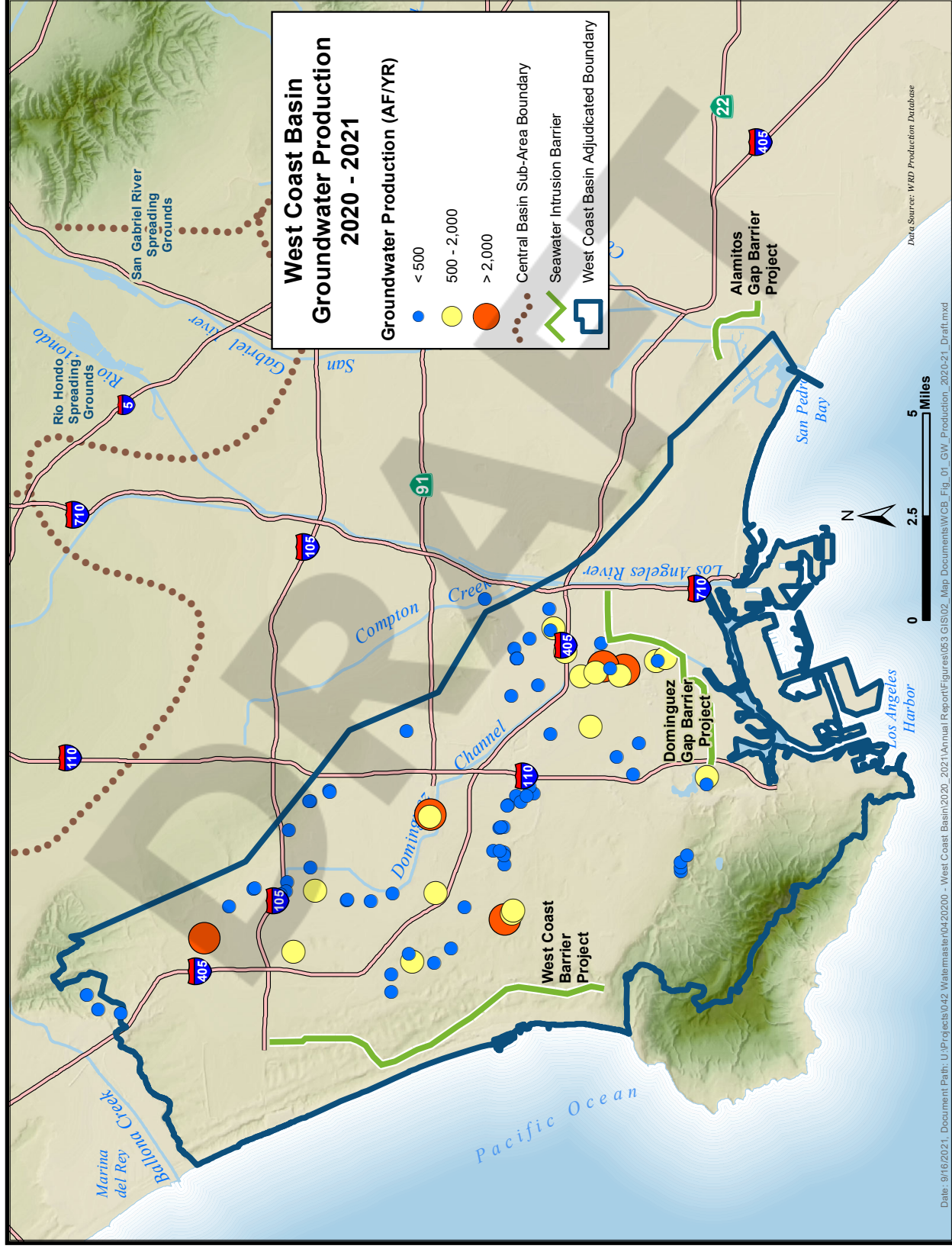


Figure 2 - Monthly Water Production
(excludes non-consumptive use)

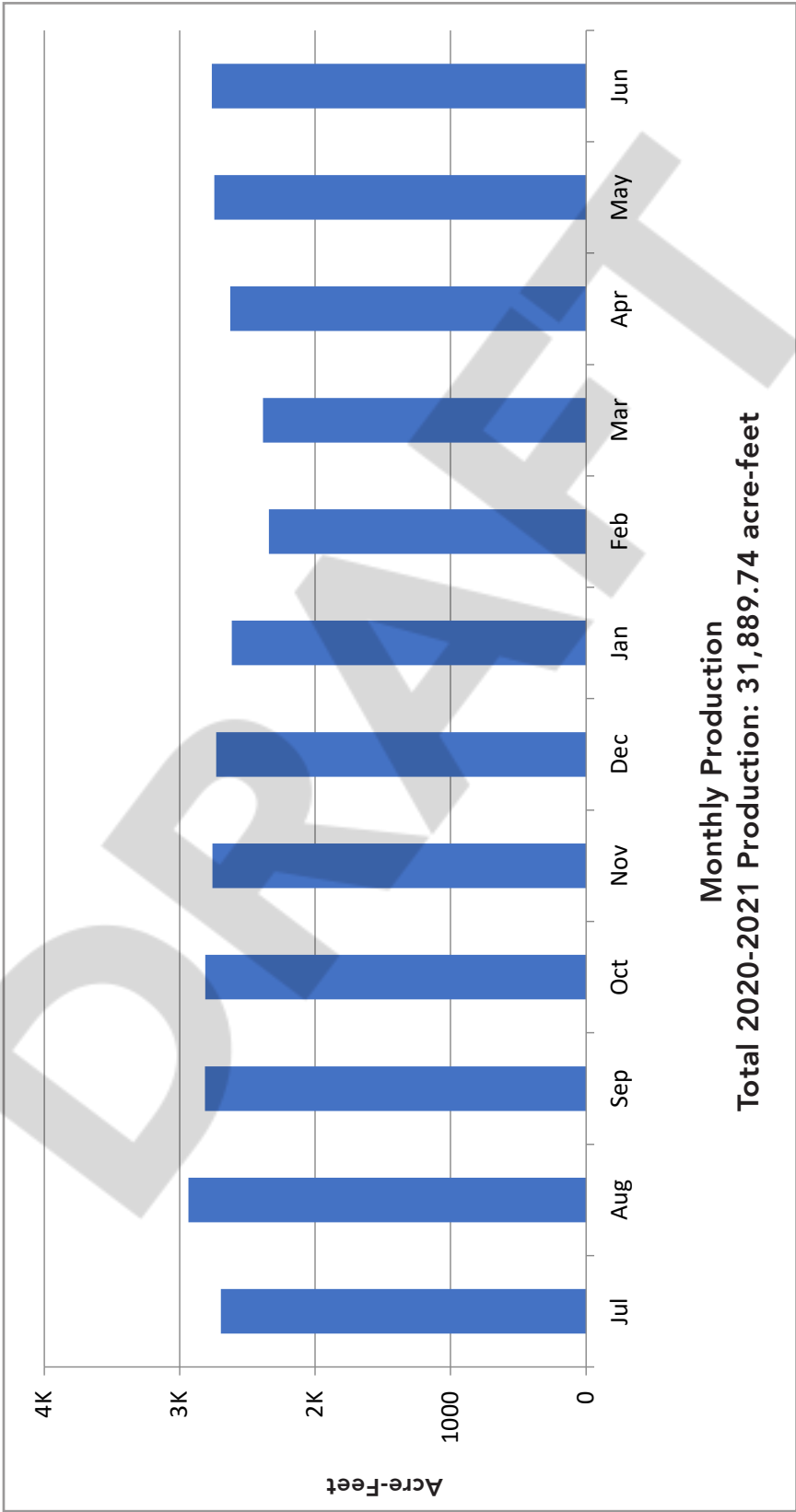


Figure 3 - West Coast Basin
(showing key wells and facilities)

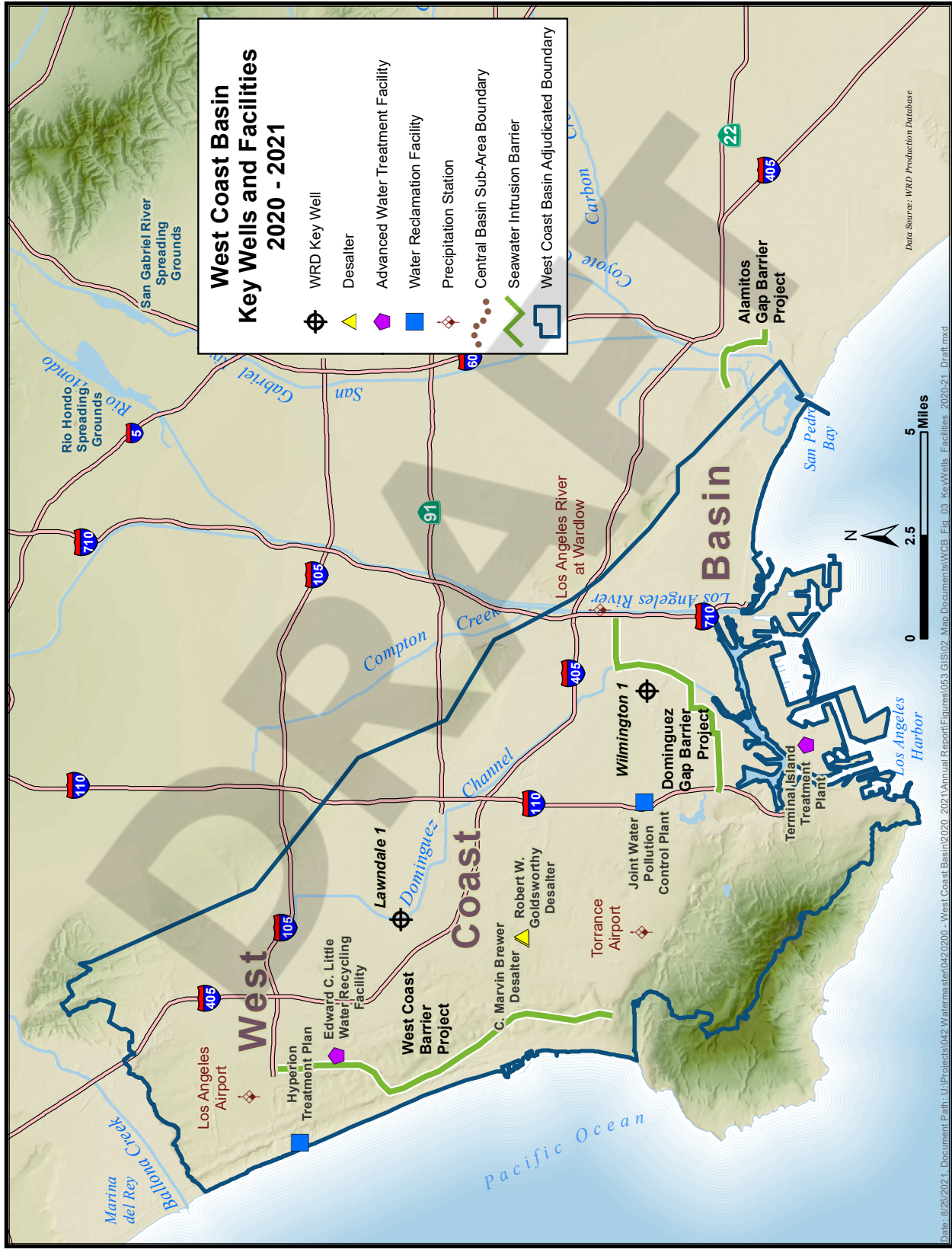


Figure 4 - Monthly Rainfall

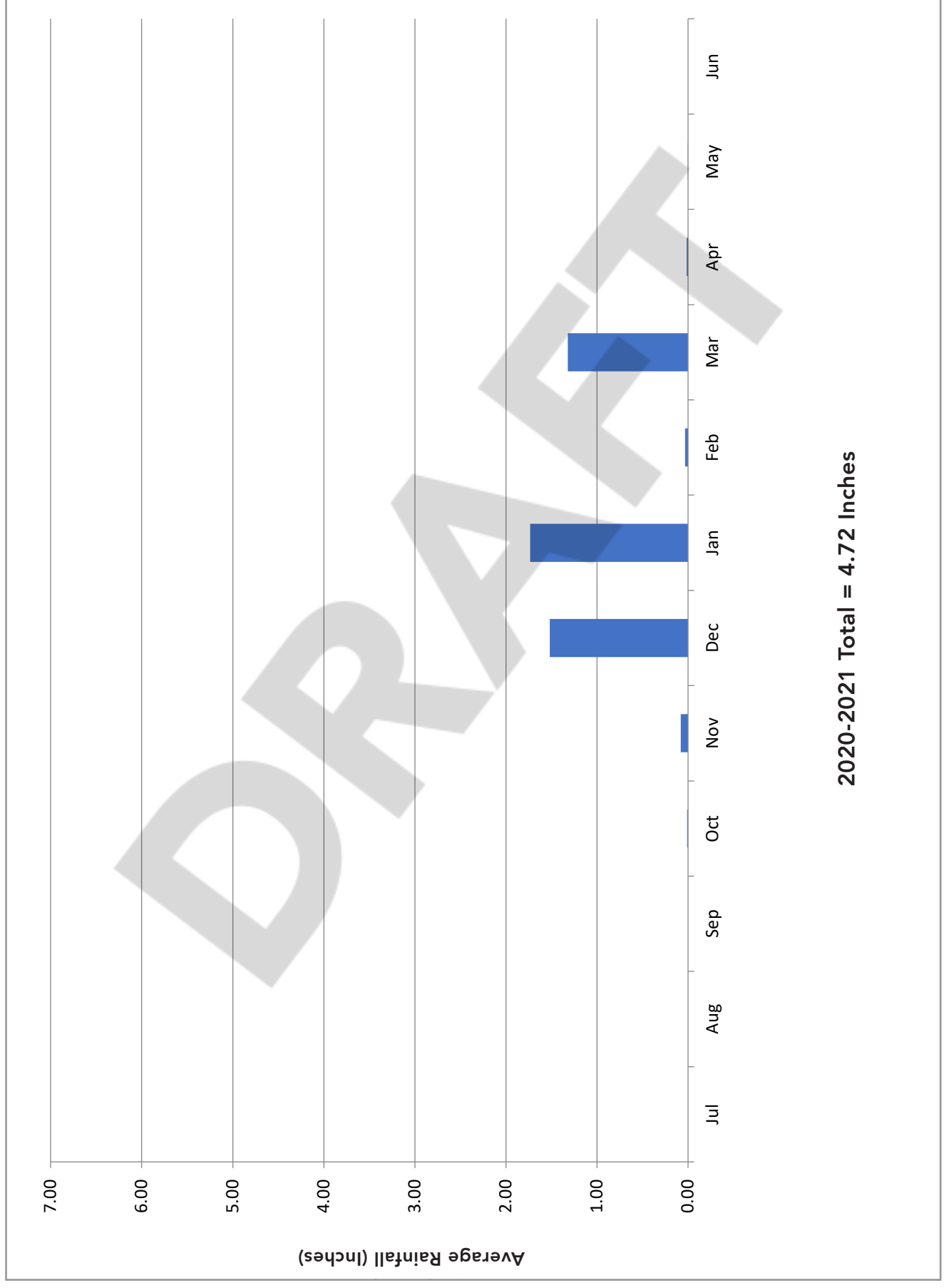


Figure 5 - Total Water Use

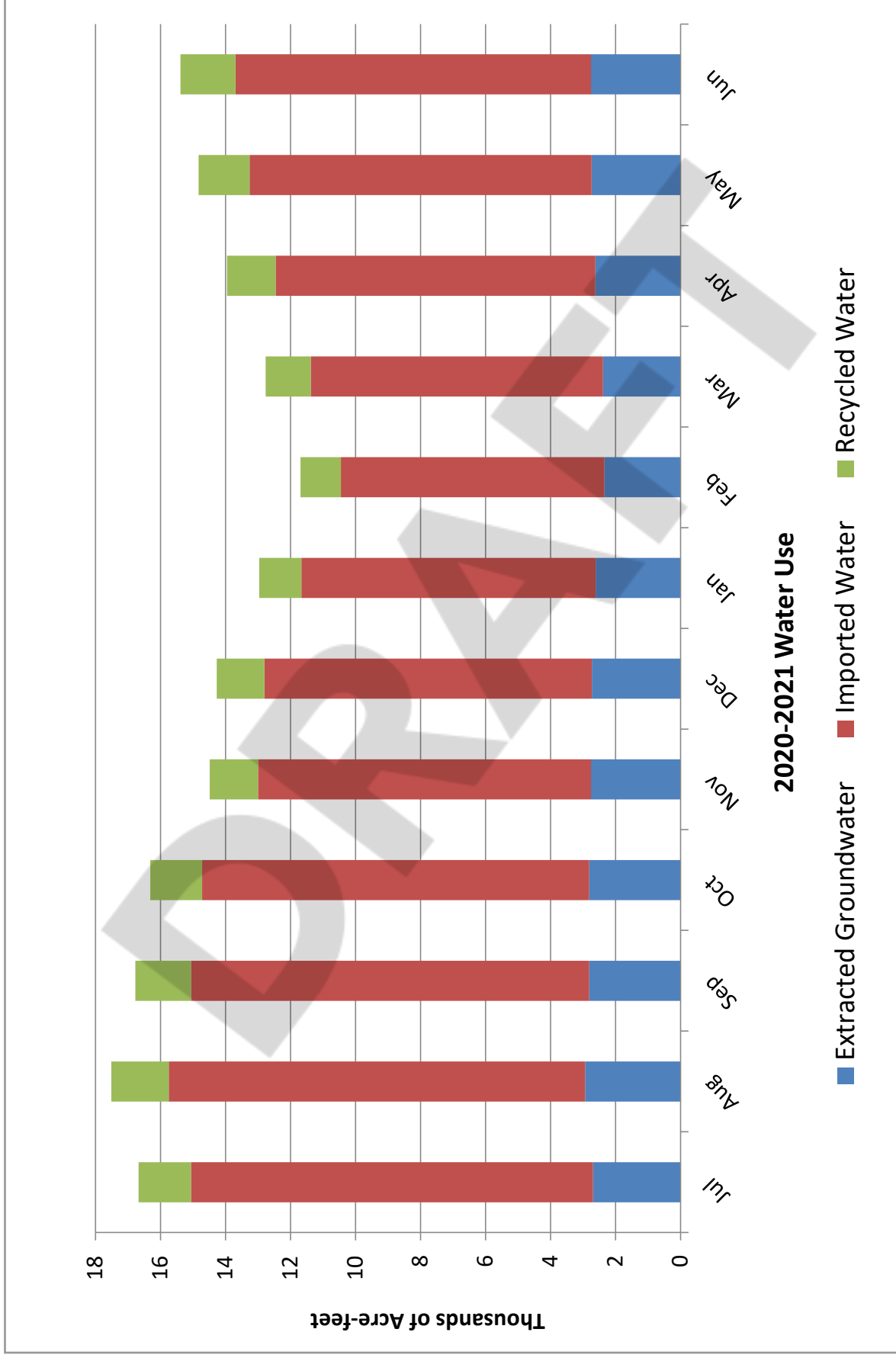
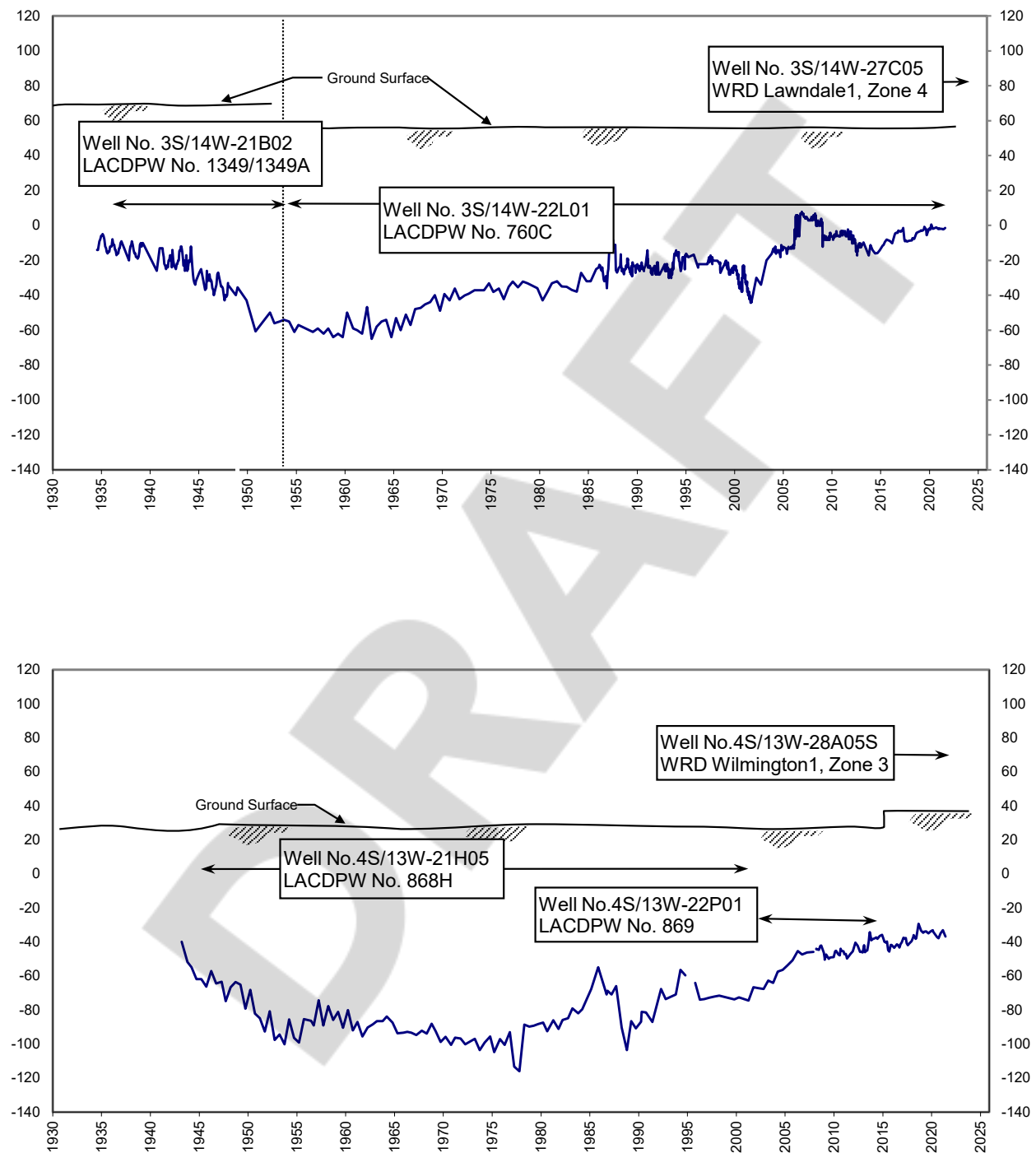


Figure 6 - Water Level Hydrographs



See Figure 3 for well locations.

X-Axis: Year

Y-Axis: Groundwater Elevation (feet mean sea level)

Appendix A

Groundwater Extractions

July 2020 - June 2021

Appendix A - Groundwater Extractions (acre-feet)

7002 - ABC Nursery, Inc.		JUL	AUG	SEPT	OCT	NOV	DEC	JAN	FEB	MAR	APR	MAY	JUN	TOTAL
SWN/Owner No.		2.00	3.00	2.00	2.00	0.00	0.00	0.00	0.00	0.00	0.00	0.00	0.00	9.00
3S/13W-29F11S/1		2.00	3.00	2.00	2.00	0.00	0.00	0.00	0.00	0.00	0.00	0.00	0.00	9.00
7052 - California Water Service Co./Hawthorne Lease		JUL	AUG	SEPT	OCT	NOV	DEC	JAN	FEB	MAR	APR	MAY	JUN	TOTAL
SWN/Owner No.		14.24	0.00	0.41	15.92	75.15	86.48	79.43	70.83	69.01	62.93	57.95	53.47	585.82
3S/14W-09M01S/13		14.24	0.00	0.41	15.92	75.15	86.48	79.43	70.83	69.01	62.93	57.95	53.47	585.82
7050 - California Water Service Company		JUL	AUG	SEPT	OCT	NOV	DEC	JAN	FEB	MAR	APR	MAY	JUN	TOTAL
SWN/Owner No.		12.72	111.70	86.96	83.61	92.53	82.01	90.10	73.07	105.38	88.60	121.61	172.11	1,120.40
3S/14W-29H01S/030-01		0.57	0.00	0.33	0.00	0.00	0.00	0.00	0.00	0.00	0.24	0.00	0.00	1.14
3S/14W-32A02S/8-02		0.50	64.09	4.07	2.39	0.84	2.13	0.93	4.42	12.86	0.86	31.70	86.87	211.66
3S/14W-29J01S/02201		11.65	47.61	82.56	81.22	91.69	79.88	89.17	68.65	92.52	87.50	89.91	85.24	907.60
7053 - California Water Service Company (Dominguez)		JUL	AUG	SEPT	OCT	NOV	DEC	JAN	FEB	MAR	APR	MAY	JUN	TOTAL
SWN/Owner No.		192.96	243.40	202.72	225.11	232.08	289.39	191.03	152.81	196.05	203.30	190.07	197.68	2,516.60
4S/13W-17D03S/219-02		0.00	0.00	0.00	0.00	0.00	0.01	0.00	0.00	0.00	0.00	0.00	0.00	0.01
4S/13W-15A14S/98		0.00	0.00	0.00	0.00	0.00	0.22	0.00	0.00	0.00	0.00	0.00	0.00	0.22
4S/13W-20C01S/79		46.22	88.35	70.11	77.93	80.99	134.95	53.15	25.70	75.90	77.51	65.48	82.51	878.80
4S/13W-15F01S/77		81.64	79.21	68.24	75.98	77.20	78.33	68.92	60.63	57.25	58.42	50.57	37.07	793.46
4S/13W-15A11S/RCO15		65.10	75.84	64.37	71.20	73.89	75.88	68.96	66.48	62.90	67.37	74.02	78.10	844.11
7623 - Eco Services Operations, LLC		JUL	AUG	SEPT	OCT	NOV	DEC	JAN	FEB	MAR	APR	MAY	JUN	TOTAL
SWN/Owner No.		34.44	31.86	32.71	16.31	6.29	9.92	9.60	6.15	105.41	32.21	29.94	29.89	344.73
4S/13W-10C04S/2		34.44	31.86	32.71	16.31	6.29	9.92	9.60	6.15	105.41	32.21	29.94	29.89	344.73

Appendix A - Groundwater Extractions Continued

7226 - Golden State Water Company		JUL	AUG	SEPT	OCT	NOV	DEC	JAN	FEB	MAR	APR	MAY	JUN	TOTAL
SWN/Owner No.		338.31	347.09	329.23	344.65	346.72	394.88	393.05	438.73	478.16	483.01	516.47	467.42	4,877.72
3S/14W-13B04S/BA005		1.12	0.69	0.04	0.57	0.00	0.26	0.27	0.33	0.83	0.20	0.09	0.50	4.90
3S/14W-14D02S/129-02		0.17	0.40	0.00	0.00	0.00	0.43	0.09	0.33	0.41	5.60	0.25	0.47	8.15
3S/14W-13I10S/S0006		0.40	0.16	0.15	0.48	0.00	0.07	0.30	6.95	0.29	0.25	0.00	0.56	9.61
3S/14W-13B03S/BA004		0.08	0.04	0.02	0.20	0.04	0.10	0.00	0.00	0.00	0.00	3.83	0.96	5.27
3S/14W-13I09S/S0005		0.24	0.14	0.14	0.45	0.00	0.08	0.45	4.60	0.58	0.24	0.00	0.40	7.32
3S/14W-15P02S/DOTY2		0.00	4.72	0.00	0.38	0.08	0.18	0.11	4.84	0.11	0.00	0.11	0.00	10.53
3S/14W-15P01S/DOTY1		0.21	0.11	0.00	0.29	0.04	0.05	0.07	3.15	0.05	0.00	0.03	0.13	4.13
3S/14W-15B03S/GOLDM		0.22	0.00	0.14	1.68	0.00	0.44	20.15	120.66	128.88	112.82	119.64	74.27	578.90
3S/14W-25P04S/DA001		0.00	0.00	0.00	0.00	42.87	100.64	99.38	88.89	97.06	94.32	97.31	93.32	713.79
3S/14W-22L01S/CD001		2.91	0.16	0.08	0.36	0.07	0.07	0.10	0.00	0.05	2.61	0.00	0.00	6.41
3S/14W-25P06S/DA002		332.96	340.67	328.66	340.24	303.62	292.56	272.13	208.98	249.90	266.97	295.21	296.81	3,528.71

7270 - Hillside Memorial Park		JUL	AUG	SEPT	OCT	NOV	DEC	JAN	FEB	MAR	APR	MAY	JUN	TOTAL
SWN/Owner No.		16.56	17.63	11.43	7.10	2.83	5.31	2.08	3.77	5.91	14.29	15.36	16.88	119.15
2S/14W-19K04S/3		16.56	17.63	11.43	7.10	2.83	5.31	2.08	3.77	5.91	14.29	15.36	16.88	119.15

7310 - Inglewood, City of		JUL	AUG	SEPT	OCT	NOV	DEC	JAN	FEB	MAR	APR	MAY	JUN	TOTAL
SWN/Owner No.		283.93	268.08	260.59	268.97	258.72	248.65	267.44	162.46	174.28	204.26	205.99	193.25	2,796.62
3S/14W-03D03S/6		43.37	38.72	39.66	41.80	38.62	36.73	41.55	0.00	0.00	0.00	0.00	0.00	280.45
3S/14W-10G04S/2		28.90	37.25	36.14	35.97	35.66	32.99	35.21	26.43	26.27	33.19	33.21	31.36	392.58
3S/14W-10G03S/1		37.88	5.71	0.00	0.00	0.00	0.00	0.00	0.00	0.00	0.00	0.00	0.00	43.59
2S/14W-33F01S/Well No. 7		173.78	186.40	184.79	191.20	184.44	178.93	190.68	136.03	148.01	171.07	172.78	161.89	2,080.00

Appendix A - Groundwater Extractions Continued

7364 - Kinder Morgan Liquids Terminals LLC	JUL	AUG	SEPT	OCT	NOV	DEC	JAN	FEB	MAR	APR	MAY	JUN	TOTAL
SWN/Owner No.	3.58	2.61	4.27	3.82	3.72	4.36	3.95	3.91	3.54	3.62	4.45	2.28	44.11
9S/99W-99A99S/REMED	3.58	2.61	4.27	3.82	3.72	4.36	3.95	3.91	3.54	3.62	4.45	2.28	44.11

7450 - Lomita, City of	JUL	AUG	SEPT	OCT	NOV	DEC	JAN	FEB	MAR	APR	MAY	JUN	TOTAL
SWN/Owner No.	0.00	0.07	0.00	0.00	0.00	0.00	0.00	0.00	0.00	0.00	0.00	0.00	0.07
4S/14W-35E07S/5	0.00	0.07	0.00	0.00	0.00	0.00	0.00	0.00	0.00	0.00	0.00	0.00	0.07

7435 - Los Angeles County Department of Parks & Recreation	JUL	AUG	SEPT	OCT	NOV	DEC	JAN	FEB	MAR	APR	MAY	JUN	TOTAL
SWN/Owner No.	63.41	50.73	59.79	18.51	23.66	20.47	9.46	13.08	15.47	38.36	36.44	46.94	396.32
3S/14W-11J02S/1397C	0.00	0.00	0.00	0.00	0.00	0.00	0.00	0.00	15.47	0.00	0.00	0.00	15.47
3S/14W-27C01S/761	63.41	50.73	59.79	18.51	23.66	20.47	9.46	13.08	0.00	38.36	36.44	46.94	380.85

7490 - Manhattan Beach, City of	JUL	AUG	SEPT	OCT	NOV	DEC	JAN	FEB	MAR	APR	MAY	JUN	TOTAL
SWN/Owner No.	5.76	7.46	5.41	18.69	7.02	4.81	0.02	0.06	0.00	0.41	0.00	1.46	51.10
3S/14W-29D05S/11-A	5.76	7.46	5.41	18.69	7.02	4.79	0.02	0.02	0.00	0.08	0.00	0.00	49.25
3S/14W-29C03S/15	0.00	0.00	0.00	0.00	0.00	0.02	0.00	0.04	0.00	0.33	0.00	1.46	1.85

7514 - Montrose Chemical Corporation of California	JUL	AUG	SEPT	OCT	NOV	DEC	JAN	FEB	MAR	APR	MAY	JUN	TOTAL
SWN/Owner No.	-0.32	-0.29	-0.14	-0.09	0.02	-0.04	-0.02	0.02	-0.09	-0.23	-0.10	-0.02	-1.30
4S/14W-01P03S/BF-EW-5	0.00	0.08	0.01	0.01	0.00	0.00	0.00	0.00	0.00	0.00	0.00	0.00	0.10
4S/14W-12J02S/BF-EW-4	4.34	4.12	0.34	0.06	1.40	2.16	1.62	1.02	0.00	0.00	1.16	3.57	19.79
4S/14W-12G01S/BF-EW-3	0.99	1.22	0.12	0.02	0.50	0.78	0.58	0.37	0.00	0.00	0.42	1.28	6.28
4S/14W-12J01S/BF-EW-2	1.32	1.77	0.19	0.03	0.00	0.00	0.00	0.00	0.00	0.00	0.00	0.00	3.31
4S/14W-12B05S/BF-EW-1	0.49	0.91	0.11	0.02	0.45	0.69	0.52	0.33	0.00	0.00	0.37	0.00	3.89
4S/14W-12H01S/G-EW-4	3.29	4.11	0.41	0.07	1.87	2.87	2.16	1.35	0.00	0.00	1.55	4.75	22.43
4S/14W-12L01S/G-EW-3	0.11	0.58	0.09	0.02	0.37	0.57	0.43	0.27	0.00	0.00	0.31	0.95	3.70

Appendix A - Groundwater Extractions Continued

7514 - Montrose Chemical Corporation of California		JUL	AUG	SEPT	OCT	NOV	DEC	JAN	FEB	MAR	APR	MAY	JUN	TOTAL
SWN/Owner No.		-0.32	-0.29	-0.14	-0.09	0.02	-0.04	-0.02	0.02	-0.09	-0.23	-0.10	-0.02	-1.30
4S/14W-12J03S/G-EW-2		0.49	0.10	0.00	0.02	0.19	0.43	0.32	0.20	0.00	0.00	0.52	1.62	3.89
4S/14W-12B06S/G-EW-1		3.62	6.09	0.73	0.12	3.27	5.03	3.79	2.37	0.00	0.00	2.71	8.32	36.05
4S/14W-12B02S/UBAEW3		0.00	0.26	0.04	0.01	0.17	0.26	0.19	0.12	0.00	0.00	0.13	0.43	1.61
4S/14W-01P02S/UBAEW1		0.00	0.40	0.06	0.06	0.09	0.14	0.11	0.07	0.00	0.00	0.08	0.24	1.25
7580 - Pacific Crest Cemetery Company		JUL	AUG	SEPT	OCT	NOV	DEC	JAN	FEB	MAR	APR	MAY	JUN	TOTAL
SWN/Owner No.		3.96	0.00	10.29	3.98	0.00	0.00	2.91	0.59	2.88	3.95	4.61	13.09	46.26
3S/14W-33E01S/00743		3.96	0.00	10.29	3.98	0.00	0.00	2.91	0.59	2.88	3.95	4.61	13.09	46.26
7093 - Phillips 66 Company		JUL	AUG	SEPT	OCT	NOV	DEC	JAN	FEB	MAR	APR	MAY	JUN	TOTAL
SWN/Owner No.		441.54	425.11	378.93	482.52	431.99	408.23	432.63	402.40	420.50	370.57	498.80	509.46	5,202.68
4S/13W-31P03S/7		108.72	63.21	0.76	122.99	159.58	155.81	157.80	157.80	118.50	86.90	173.30	160.10	1,465.47
4S/13W-21J03S/5		137.50	168.80	159.02	164.62	63.17	0.85	0.00	0.00	0.00	0.00	0.00	0.00	693.96
4S/13W-31N04S/LA006		58.32	58.27	53.98	2.02	0.01	0.00	0.00	0.00	0.00	0.00	48.90	57.00	278.50
4S/13W-21R11S/CBP Well 6		137.00	134.83	165.17	192.89	209.23	251.57	274.83	244.60	302.00	283.67	276.60	292.36	2,764.75
7655 - Rolling Hills Country Club		JUL	AUG	SEPT	OCT	NOV	DEC	JAN	FEB	MAR	APR	MAY	JUN	TOTAL
SWN/Owner No.		50.00	55.00	37.00	23.00	12.00	21.00	3.00	21.00	21.00	22.00	33.00	50.00	348.00
4S/14W-35E06S/SIDEB		0.00	0.00	37.00	0.00	0.00	0.00	0.00	0.00	0.00	0.00	0.00	0.00	37.00
4S/14W-34H02S/Lake Well 2		50.00	55.00	0.00	23.00	12.00	21.00	3.00	21.00	21.00	22.00	33.00	50.00	311.00
7659 - Roman Catholic Archbishop of Los Angeles		JUL	AUG	SEPT	OCT	NOV	DEC	JAN	FEB	MAR	APR	MAY	JUN	TOTAL
SWN/Owner No.		36.09	4.34	35.21	32.15	24.44	20.26	9.70	8.17	10.28	26.22	25.96	0.00	232.82
2S/14W-18J01S/AA		36.09	4.34	35.21	32.15	24.44	20.26	9.70	8.17	10.28	26.22	25.96	0.00	232.82

Appendix A - Groundwater Extractions Continued

7701 - Shell Oil Co NCWUP	JUL	AUG	SEPT	OCT	NOV	DEC	JAN	FEB	MAR	APR	MAY	JUN	TOTAL
SWN/Owner No.	9.02	10.05	10.07	12.79	9.70	7.15	9.59	10.99	15.26	14.56	18.78	15.25	143.21
4S/13W-10K02S/DOM-GSP-R2	8.06	9.96	10.07	12.79	9.70	7.15	9.59	9.04	9.88	10.12	10.48	9.90	116.74
4S/13W-09D01S/DR-7	0.00	0.00	0.00	0.00	0.00	0.00	0.00	0.00	0.05	0.11	0.03	0.03	0.22
4S/13W-10E06S/R-123	0.32	0.03	0.00	0.00	0.00	0.00	0.00	0.00	0.00	0.00	0.00	0.00	0.35
4S/13W-10E05S/R-122	0.32	0.03	0.00	0.00	0.00	0.00	0.00	0.00	0.00	0.00	0.00	0.00	0.35
4S/13W-10E07S/DD-3	0.32	0.03	0.00	0.00	0.00	0.00	0.00	1.95	5.33	4.33	8.27	5.32	25.55

7720 - Southern California Edison Co.	JUL	AUG	SEPT	OCT	NOV	DEC	JAN	FEB	MAR	APR	MAY	JUN	TOTAL
SWN/Owner No.	3.30	3.30	3.10	2.50	1.00	1.00	1.00	1.00	3.00	2.00	2.00	4.00	27.20
3S/14W-34N04S/SCECO	3.30	3.30	3.10	2.50	1.00	1.00	1.00	1.00	3.00	2.00	2.00	4.00	27.20

7807 - Tesoro Refining & Marketing Co., LLC	JUL	AUG	SEPT	OCT	NOV	DEC	JAN	FEB	MAR	APR	MAY	JUN	TOTAL
SWN/Owner No.	695.68	716.31	691.95	646.26	668.26	630.76	588.10	540.51	485.00	737.30	725.70	759.07	7,884.90
4S/13W-16J06S/14	94.40	129.22	132.49	113.61	129.19	118.29	117.50	118.99	122.04	99.97	92.30	95.52	1,363.52
4S/13W-27M06S/SHE15	197.25	186.41	171.73	165.72	157.76	146.68	140.00	140.86	126.61	120.28	102.16	69.94	1,725.40
9S/99W-99P99S/REMED	12.82	9.52	12.05	8.30	10.13	12.36	9.10	10.43	12.82	9.91	10.01	11.99	129.44
4S/13W-27N06S/SHE12	106.89	99.84	90.94	76.48	95.96	78.93	73.40	36.11	62.49	67.06	63.51	57.17	908.78
4S/13W-22F07S/SRP12	19.27	22.62	21.40	20.03	17.02	15.64	17.10	17.69	17.75	16.57	17.37	17.98	220.44
4S/13W-21H08S/Well 16	265.05	268.70	263.34	262.12	258.20	258.86	231.00	163.63	0.00	162.37	252.40	228.61	2,614.28
2S/14W-23H22S/MH-MW-01A	0.00	0.00	0.00	0.00	0.00	0.00	0.00	52.80	143.29	261.14	187.95	277.86	923.04

7510 - Torrance Refining & Marketing Company	JUL	AUG	SEPT	OCT	NOV	DEC	JAN	FEB	MAR	APR	MAY	JUN	TOTAL
SWN/Owner No.	26.84	0.00	26.34	65.88	69.08	94.13	103.61	99.27	106.12	107.78	110.67	107.32	917.04
4S/14W-02F01S/EW-5	0.00	0.00	0.00	13.33	17.07	27.96	34.35	32.74	35.73	34.78	35.63	34.27	265.86
4S/14W-02L02S/EW-3	0.00	0.00	0.00	0.00	0.00	10.33	13.81	14.97	17.14	16.79	17.33	16.84	107.21
4S/14W-02L01S/EW-2	26.83	0.00	19.21	22.56	25.76	0.00	0.00	0.00	0.00	0.00	0.00	0.00	94.36

Appendix A - Groundwater Extractions Continued

7510 - Torrance Refining & Marketing Company		JUL	AUG	SEPT	OCT	NOV	DEC	JAN	FEB	MAR	APR	MAY	JUN	TOTAL
SWN/Owner No.		26.84	0.00	26.34	65.88	69.08	94.13	103.61	99.27	106.12	107.78	110.67	107.32	917.04
4S/14W-02M04S/EW-1		0.01	0.00	7.13	29.99	26.25	27.68	28.85	26.36	24.01	28.53	29.37	28.53	256.71
4S/14W-02P01S/EW-02R		0.00	0.00	0.00	0.00	0.00	28.16	26.60	25.20	29.24	27.68	28.34	27.68	192.90

7850 - Torrance, City of		JUL	AUG	SEPT	OCT	NOV	DEC	JAN	FEB	MAR	APR	MAY	JUN	TOTAL
SWN/Owner No.		432.63	554.77	563.84	566.34	528.80	432.50	366.91	325.15	140.17	146.75	159.25	152.09	4,369.20
3S/14W-34C03S/9		129.14	153.56	153.41	155.19	110.46	160.55	150.24	139.56	140.17	146.75	159.25	152.09	1,750.37
4S/14W-04R02S/City Yard		208.30	252.35	242.10	225.05	215.74	58.21	0.00	0.00	0.00	0.00	0.00	0.00	1,201.75
4S/14W-04R01S/Delthorne Park		95.19	148.86	168.33	186.10	202.60	213.74	216.67	185.59	0.00	0.00	0.00	0.00	1,417.08

7917 - Water Replenishment District of Southern California		JUL	AUG	SEPT	OCT	NOV	DEC	JAN	FEB	MAR	APR	MAY	JUN	TOTAL
SWN/Owner No.		0.00	0.00	0.00	0.00	0.00	0.00	0.00	0.00	220.19	199.16	254.37	335.87	1,009.59
4S/14W-04R02S/City Yard		0.00	0.00	0.00	0.00	0.00	0.00	0.00	0.00	0.00	0.00	39.67	114.16	1,355.58
4S/14W-04R01S/Delthorne Park		0.00	0.00	0.00	0.00	0.00	0.00	0.00	0.00	220.19	199.16	214.70	221.71	2,272.84

7054 - West Basin Brewer Desalter		JUL	AUG	SEPT	OCT	NOV	DEC	JAN	FEB	MAR	APR	MAY	JUN	TOTAL
SWN/Owner No.		91.85	115.29	117.26	23.16	1.99	2.47	73.63	30.90	59.03	120.74	47.61	2.19	686.12
4S/14W-09A02S/232-03		91.85	115.29	117.26	23.16	1.99	2.47	73.63	30.90	59.03	120.74	47.61	2.19	686.12

Appendix B

Successions of Adjudicated Rights

as of

June 2021

Appendix B - Succession of Adjudicated Rights

June 2021 (acre-feet)

ABC NURSERY, INC			SUCCESSORS IN PART TO ISABELA J GRANZ	13.55	
SUCCESSOR TO JENKINS, HARRY C	1.80		ESTATE		
SUCCESSOR TO TITLE, SIDNEY R AND	13.60		SUCCESSORS IN PART TO GEORGE R	13.75	
CHARLOTTE W			MURDOCK		
SUCCESSOR TO VERBURG, WILLIAM AND	6.70		SOLD TO CITY OF TORRANCE	-59.96	
CLARA B			TOTAL		0.00
SUCCESSOR IN PART TO UNITED CALIFORNIA	2.00		BAUMAN, GUS A	0.00	
BANK			TRANSFERRED TO PALOS VERDES BEGONIA FARM		
TOTAL	24.10		TOTAL		0.00
ABELL, FRANK	1.80		BEGO CORPORATION	4.10	
SOLD TO CITY OF INGLEWOOD	-1.80		SOLD TO ESTATE OF GOLDA DELANEY	-4.10	
TOTAL		0.00	TOTAL		0.00
ALCAST FOUNDRY, ET AL	7.20		BELVIDERE MUTUAL WATER CO	33.40	
SOLD TO CITY OF TORRANCE	-7.20		SOLD TO CITY OF TORRANCE	-33.40	
TOTAL		0.00	TOTAL		0.00
ALLIED CHEMICAL CORP			BLACK, DANA		
(SEE INDUSTRIAL CHEMICAL DIVISION, ALLIED			SUCCESSOR IN PART TO ESTATE OF JOHN	11.80	
CHEMICAL CORP)			GRANT		
ALLIED CORP			SOLD TO ECOGAS, INC.	-11.80	
(FORMERLY: ALLIED CHEMICAL CORP)			TOTAL		0.00
(NOW KNOWN AS ALLIED-SIGNAL, INC			BOISE CASCADE BUILDING CO		
[EL SEGUNDO OFFICE])			SUCCESSOR IN PART TO JOUGHIN TORRANCE	16.92	
ALLIED-SIGNAL, INC (TORRANCE OFFICE)			RANCH		
SUCCESSOR TO GARRETT CORP, THE	22.50		SOLD TO INGLEWOOD, CITY OF	-16.92	
(MERGED WITH HONEYWELL			TOTAL		0.00
INTERNATIONAL, INC AND NAME CHANGED TO			BOARD OF RETIREMENT-LOS ANGELES CO EEMPL RET SYS		
HONEYWELL INTERNATIONAL, INC)	-22.50		SECOND WEST COAST BASIN JUDGMENT		
TOTAL		0.00	(NOW KNOWN AS LOS ANGELES COUNTY WESTERN AVE GOLF)		
ALLIED-SIGNAL, INC (EL SEGUNDO OFFICE)			BRANDSMA, MAYNARD		
(FORMERLY: ALLIED CORP	255.00		SUCCESSOR IN PART TO ESTATE OF JOHN	11.80	
(MERGED WITH HONEYWELL INTERNATIONAL,	-255.00		GRANT		
INC AND NAME CHANGED TO HONEYWELL			SOLD TO HILLSIDE MEMORIAL PARK	-11.80	
INTERNATIONAL, INC)			TOTAL		0.00
TOTAL		0.00	BURKE, W F AND LOIS PRICE	9.50	
ALWAG, HILARIO S AND EMMA			SOLD TO H S SCOTT	-9.50	
SUCCESSOR TO T C NAVARRO	53.90		TOTAL		0.00
SUCCESSOR TO PEGGY SWICK	5.50		CBS INC		
SOLD TO TORRANCE UNIFIED SCHOOL	-59.40		FORMERLY COLUMBIA BROADCASTING SYS	18.50	
DISTRICT			INC		
TOTAL		0.00	SOLD TO MORAN, RONALD E	-9.00	
AMERICAN PLANT GROWERS, INC			TOTAL		9.50
SECOND WEST COAST BASIN JUDGMENT	2.60		CALIFORNIA, STATE OF		
SUCCESSOR TO BEN CLUFF DAIRY	7.40		SUCCESSOR TO ROBERT L FULLILOVE	1.00	
SOLD TO SUNRISE GROWERS, INC	-10.00		SUCCESSOR TO JOE MONIZ JR	2.20	
SUCCESSOR TO SUNRISE GROWERS, INC	10.00		SUCCESSOR IN PART TO KELLY PIPE CO	16.30	
SOLD TO VUKELICH MIKE, JR.	-10.00		SUCCESSOR IN PART TO FLAVIO RODRIGUEZ	4.00	
TOTAL		0.00	SUCCESSOR IN PART TO A H SMITH (SAM	2.60	
ANDERSON, REMBERT C	80.50		SURBER AND FRED A SMITH)		
SOLD TO SPARKLETTS DRINKING WATER	-80.50		SOLD TO SPARKLETTS DRINKING WATER	-26.10	
CORP			CORP		
TOTAL		0.00	TOTAL		0.00
AQUA CAPITAL MANAGEMENT LP			CALIFORNIA WATER SERVICE CO	3,071.00	
SUCCESSOR TO ECOGAS	11.80		SUCCESSOR TO PALOS VERDES WATER CO	999.00	
SOLD TO HILLSIDE MEMORIAL PARK AND	-11.80		TOTAL		4,070.00
MORTUARY			CALIFORNIA WATER SERVICE CO (DOMINGUEZ)		
TOTAL		0.00	DOMINGUEZ WATER CO MERGED WITH AND	10,162.45	
ASAHI FANCY KOI, INC			INTO CALIFORNIA WATER SERVICE CO,		
SUCCESSOR IN PART TO JAKE ENGELSMA	2.00		WATERMASTER ACCOUNT KNOWN AS		
TOTAL		2.00	CALIFORNIA WATER SERVICE CO		
ASSOCIATED SOUTHERN INVESTMENT CO			(DOMINGUEZ)		
(FORMERLY EDISON SECURITIES CO)	46.70		SUCCESSOR IN PART TO HONEYWELL	255.00	
SOLD TO SOUTHERN CALIFORNIA EDISON CO	-46.70		INTERNATIONAL INC		
TOTAL		0.00	TOTAL		10,417.45
ATLANTIC RICHFIELD CO			CARSON ESTATE CO	130.00	
(FORMERLY RICHFIELD OIL CO)	4,428.00		SOLD TO DOMINGUEZ WATER CORP	-130.00	
SUCCESSOR TO MANVILLE SALES CORP	881.00		TOTAL		0.00
SOLD TO TESORO REFINING AND MARKETING			CARSON-HARBOR VILLAGE MOBILE HOME PARK		
COMPANY LLC (6-13-2013)	-5,309.00		SUCCESSOR TO ETCEHEMENDY, CAROLINE,	8.20	
TOTAL		0.00	ESTATE OF		
AUTOMATION INDUSTRIES			SOLD TO MONTROSE CHEMICAL	-1.20	
SUCCESSOR TO HARRIS TUBE, INC	0.70		CORPORATION OF CALIFORNIA (9-28-2011)		
TOTAL		0.70	TOTAL		7.00
BALLMAN, ROSEMARY N	7.00		CARSON-MADRONA CO		
SOLD TO UNITED CALIFORNIA BANK	-7.00		SUCCESSOR TO CHANSLOR-WESTERN OIL AND	104.00	
TOTAL		0.00	DEVELOP CO		
BANK OF AMERICA NATIONAL TRUST AND SAVINGS	0.10		TOTAL		104.00
ASSOCIATION (TRUST BI-51)			CENTURY BUILDERS		
RELEASED TO MICHAEL L ROCKWELL	-0.10		SUCCESSOR TO UNION NURSERY, INC	4.70	
TOTAL		0.00	TOTAL		4.70
BARCLAY HOLLANDER CORP			CHANDLERS PALOS VERDES SAND AND GRAVEL CORP		
(FORMERLY BARCLAY HOLLANDER CURCI INC)			SECOND WEST COAST BASIN JUDGMENT	95.20	
SUCCESSOR IN PART TO JOUGHIN TORRANCE	3.33		SUCCESSOR TO SOUTHWESTERN PORTLAND	15.00	
RANCH			CEMENT CO		
SOLD TO TORRANCE, CITY OF	-3.33		SUCCESSOR TO TORRANCE SAND AND	184.00	
TOTAL		0.00	GRAVEL CORP		
BARCLAY HOLLANDER CURCI INC			SOLD TO ROLLING HILLS COUNTRY CLUB	-290.00	
(NOW KNOWN AS BARCLAY HOLLANDER CORP)			TOTAL		4.20
BARCLAY, RICHARD AND R A WATT			CHANSLOR-WESTERN OIL AND DEVELOPMENT CO	104.00	
SUCCESSORS TO EMMA J OSBORN	32.66				

(FORMERLY CHANSLOR-CANFIELD MIDWAY OIL CO)			DOUGLAS AIRCRAFT CO, INC		
SOLD TO CARSON-MADRONA CO	-104.00		(SEE MCDONNELL DOUGLAS CORP)		
TOTAL		0.00	EARLY, H J AND DAISY	111.00	
CHEMICALS CO OF ALLIED CORP			SOLD TO DOMINGUEZ WATER CORP	-91.00	
(FORMERLY INDUSTRIAL CHEMICAL DIVISION, ALLIED			SOLD TO SAMUEL R AND RAYMOND S	-20.00	
CHEMICAL CORP)			FUJIMOTO		
(NOW KNOWN AS ALLIED CORP)			TOTAL		0.00
CHEVRON USA INC	4,541.70		ECOGAS, INC.		
(FORMERLY STANDARD OIL CO OF CALIFORNIA)			SUCCESSOR TO BLACK, DANA	11.80	
SUBJECT TO LONG TERM LEASE FROM	59.60		SOLD TO AQUA CAPITAL MANAGEMENT LP	-11.80	
ISABELLA GRANZ PER JUDGEMENT			TOTAL		0.00
TOTAL		4,601.30	ECO SERVICES OPERATIONS LLC	521.00	
CHRISTIE, CLEM, DON C FOHL AND LEON LARSON	0.02		(FORMERLY SOLVAY USA INC.)		
(TRUSTEES OF WILMINGTON CEMETERY ASSOC)			TOTAL		521.00
ABANDONED WATER RIGHT	-0.02		EDISON SECURITIES CO		
TOTAL		0.00	(NOW KNOWN AS ASSOCIATED SOUTHERN		
CHURCHILL DOWNS CALIFORNIA CO			INVESTMENT CO)		
SUCCESSOR TO HOLLYWOOD PARK	282.00		EL SEGUNDO, CITY OF	953.00	
OPERATING CO			TOTAL		953.00
SOLD TO HOLLYWOOD PARK LAND COMPANY, LLC	-282.00		ENGELSMA, JAKE		
TOTAL		0.00	SUCCESSOR TO WILBUR HORNSTRA	14.10	
CLUFF, BEN DAIRY			SOLD TO ASAHI FANCY KOI, INC	-2.00	
SUCCESSOR TO EDWARD AND EMILY COST	7.40		TRANSFERRED TO SUSAN ENGELSMA,	-12.10	
SOLD TO AMERICAN PLANT GROWERS, INC	-7.40		TRUSTEE ET AL		
TOTAL		0.00	TOTAL		0.00
COAST FOREST PRODUCTS			ENGELSMA, SUSAN; TRUSTEE OF THE SUSAN		
SUCCESSOR TO SOUTHWEST STEEL ROLLING	3.40		ENGELSMA TRUST		
MILLS			TRANSFERRED FROM JAKE ENGLESMA	12.10	
SOLD TO GEORGIA-PACIFIC CORP	-3.40		TOTAL		12.10
TOTAL		0.00	EQUILON ENTERPRISES, LLC		
COASTLINE CHURCH OF CHRIST			SUCCESSOR TO TEXACO REFINING AND	3,432.00	
SUCCESSOR TO LERMENS, EVELYN	0.70		MARKETING, INC		
TOTAL		0.70	SOLD TO SHELL OIL PRODUCTS US	-3,432.00	
COLLISTER, CAMERON			TOTAL		0.00
SUCCESSOR TO JOUGHIN TORRANCE RANCH	136.82		ETCHEMENDY, CAROLINE, ESTATE OF	8.20	
QUITCLAIMED TO NORMANDIE PARK	-136.82		SOLD TO CARSON-HARBOR VILLAGE MOBILE	-8.20	
TOTAL		0.00	HOME PARK		
COLUMBIA BROADCASTING SYSTEM, INC			TOTAL		0.00
(NOW KNOWN AS CBS INC)			EVERGREEN AMERICA CORP		
CONOCOPHILLIPS COMPANY			SUCCESSOR TO POTHOS CORP	5.40	
SUCCESSOR TO TOSCO CORPORATION			TOTAL		5.40
(NOW KNOWN AS PHILLIPS 66 COMPANY)			EWING, CARMELITA ROSECRANS	91.30	
COST, EDWARD AND EMILY	7.40		SOLD TO SOUTHERN CALIFORNIA WATER CO	-91.30	
SOLD TO BEN CLUFF DAIRY	-7.40		TOTAL		0.00
TOTAL		0.00	EWING, NED ET AL		
CURTIS, OWEN W	3.80		SUCCESSOR IN PART TO ISABEL J GRANZ	6.50	
SOLD TO SOUTHERN CALIFORNIA WATER CO	-3.44		ESTATE		
TOTAL		0.36	SOLD TO R A WATT, INC	-6.50	
DEL AMO ESTATE CO	121.00		TOTAL		0.00
SOLD TO DOMINGUEZ WATER CORP	-121.00		FLESH, LESLIE R AND ANDOR PASTERNAK, ET AL		
TOTAL		0.00	SUCCESSORS TO ALFRED D AND RUTH	3.50	
DELANEY, GOLDA, ESTATE OF			SEABACK		
(FORMERLY ARTHUR J DELANEY)			SOLD TO STANLEY C LAGERLOF	-3.50	
SUCCESSOR TO BEGO CORP	4.10		TOTAL		0.00
TOTAL		4.10	FLETCHER OIL AND REFINING CO		
DENNIS, ESTHER M SHEETS			(FORMERLY FLETCHER OIL CO)	86.30	
(FORMERLY ESTHER M SHEETS)	5.50		SUCCESSOR TO FLETCHER, ROBERT G ET AL	3.70	
SOLD TO TORRANCE, CITY OF	-5.50		SOLD TO WESTERN WATER CO	-90.00	
TOTAL		0.00	TOTAL		0.00
DESSER ENTERPRISES, INC.			FLETCHER, ROBERT G, DANIEL S, AND WILFRED O		
SECOND WEST COAST BASIN JUDGMENT	0.00	0.00	SUCCESSOR TO FRED A JUNGQUIST	3.70	
SOLD TO MYRON Z. CHLAVIN AND NETTIE			SOLD TO FLETCHER OIL AND REFINING CO	-3.70	
DESSER TRUST AND JHD PROPERTIES, LLC	-0.00		TOTAL		0.00
TOTAL		0.00	FUJIMOTO, SAMUEL R		
DOMINGUEZ ESTATE CO	254.00		(FORMERLY KNOWN AS FUJIMOTO, SAMUEL R		
SOLD TO DOMINGUEZ WATER CORP	-254.00		AND RAYMOND S)		
TOTAL		0.00	SUCCESSOR IN PART TO H J AND DAISY	20.00	
DOMINGUEZ WATER CORP			EARLY		
(NOW KNOWN AS DOMINGUEZ WATER CO)			SOLD TO FUJIMOTO, SAMUEL R, STEVEN T	-20.00	
DOMINGUEZ WATER CO	9,477.80		AND JON T JOINT TENANTS		
(FORMERLY KNOWN AS DOMINGUEZ WATER CORP)			TOTAL		0.00
SUCCESSOR TO CARSON ESTATE CO	130.00		FUJIMOTO, SAMUEL R AND RAYMOND S		
SUCCESSOR TO DEL AMO ESTATE CO	121.00		(SEE FUJIMOTO, SAMUEL R)		
SUCCESSOR TO DOMINGUEZ ESTATE CO	254.00		FUJIMOTO, SAMUEL R, STEVEN T AND JON K,		
SUCCESSOR TO DON WILSON BUILDERS	32.60		JOINT TENANTS		
SUCCESSOR TO HEYDENBECK, JEANETTE R	0.70		SUCCESSOR TO FUJIMOTO, SAMUEL R	20.00	
SUCCESSOR TO NAKANO, KIKUNO, ET AL	19.30		TOTAL		20.00
SUCCESSOR IN PART TO H J EARLY	91.00		FULLILOVE, ROBERT L	1.00	
SUCCESSOR IN PART TO R A WATT, INC	61.85		SOLD TO STATE OF CALIFORNIA	-1.00	
SOLD IN PART TO WATSON LAND CO	-37.60		TOTAL		0.00
SUCCESSOR TO THORPE, GREGORY	11.80		FUTURA INDUSTRIES, INC		
DOMINGUEZ WATER CO MERGED WITH AND INTO	-		SUCCESSOR TO SPANISH AMERICAN	44.40	
CALIFORNIA WATER SERVICE CO, WATERMASTER	10,162.45		INSTITUTE		
ACCOUNT KNOWN AS CALIFORNIA WATER SERVICE			SOLD TO KAUFMAN, LEO AND SHELDON BAER	-44.40	
CO (DOMINGUEZ)			TOTAL		0.00
TOTAL		0.00	GARRETT CORP, THE		
DON WILSON BUILDERS			SUCCESSOR TO SHINODA BROTHERS INC	22.50	
SUCCESSORS TO KASUO, ISAMU, AND	32.60		TRANSFERRED TO ALLIED-SIGNAL INC	-22.50	
YOSHIKI R KITA			(TORRANCE OFFICE)		
SOLD TO DOMINGUEZ WATER CORP	-32.60		TOTAL		0.00
TOTAL		0.00	GATX TANK STORAGE TERMINALS CORP		

SUCCESSOR TO PHILLIPS PETROLEUM CO	167.00		(FORMERLY HOLLYWOOD TURF CLUB)		
SOLD TO KINDER MORGAN LIQUIDS	-167.00		(NOW KNOWN AS HOLLYWOOD PARK OPERATING CO)		
TERMINALS, LLC.			HOLLYWOOD PARK LAND COMPANY, LLC		
TOTAL		0.00	SUCCESSOR TO CHURCHILL DOWNS	282.00	
GEORGIA-PACIFIC CORP			CALIFORNIA COMPANY		
SUCCESSOR TO COAST FOREST PRODUCTS	3.40		TOTAL		282.00
SOLD TO INGLEWOOD, CITY OF	-3.40		HOLLYWOOD PARK OPERATING CO		
TOTAL		0.00	(FORMERLY HOLLYWOOD PARK INC)	282.00	
GERAHUE LAND CO			SOLD TO CHURCHILL DOWNS CALIFORNIA CO	-282.00	
SUCCESSOR AND ASSIGNEE FOR A S	11.90		TOTAL		0.00
JOHNSTON DRILL CO			HOLLYWOOD TURF CLUB		
ABANDONED WATER RIGHT	-11.90		(NOW KNOWN AS HOLLYWOOD PARK INC)		
TOTAL		0.00	HONEYWELL INTERNATIONAL INC		
GILLINGHAM, FLORENCE R, ET AL	2.40		MERGED WITH ALLIED-SIGNAL INC (EL		
TOTAL		2.40	SEGUNDO AND TORRANCE OFFICES) AND		
GOLDEN STATE WATER COMPANY			THE CORP NAME CHANGED TO		
SUCCESSOR TO SOUTHERN CALIFORNIA			HONEYWELL INTERNATIONAL INC	277.50	
WATER COMPANY (NAME CHANGE)	7,502.24		SOLD IN PART TO CALIFORNIA WATER	-255.00	
TOTAL		7,502.24	SERVICE CO (DOMINGUEZ)		
GONZALES, FELIPE AND GABRIELA			TOTAL		22.50
(NOW KNOWN AS GONZALES, GABRIELA AND			HONOLD, KRISTIN BRANDSMA		
MARIA R)			SUCCESSOR IN PART TO ESTATE OF JOHN	11.80	11.80
GONZALES, GABRIELA AND MARIA R			GRANT		
(FORMERLY GONZALES, FELIPE AND GABRIELA)	34.30		HORNSTRA, WILBUR	14.10	
SOLD TO TORRANCE, CITY OF	-34.30		SOLD TO JAKE ENGELSMA	-14.10	
TOTAL		0.00	TOTAL		0.00
GRAND LAND CO			HUGHES AIRCRAFT	0.00	0.00
SUCCESSOR IN PART TO SMITH, A H, ET AL	5.70		(SEE 1981 JUDGMENT ORDER)		
ABANDONED WATER RIGHTS 1961-62	-5.70		HUNT, DONALD G		
TOTAL		0.00	SUCCESSOR TO JAMES SCANDA	1.90	
GRANT, JOHN, ESTATE OF	59.00		SOLD TO KENICHI INOSE	-1.90	
APPORTIONED IN PART TO BLACK, DANA	-11.80		TOTAL		0.00
APPORTIONED IN PART TO BRANDSMA,	-11.80		INDUSTRIAL CHEMICAL DIVISION, ALLIED CHEMICAL		
MAYNARD			CORP		
APPORTIONED IN PART TO HONOLD, KRISTIN	-11.80		(FORMERLY ALLIED CHEMICAL CORP, GEN		
BRANDSMA			CHEMICAL CO)		
APPORTIONED IN PART TO THORPE,	-11.80		(NOW KNOWN AS ALLIED CORP)		
GREGORY			INGLEWOOD, CITY OF	4,382.00	
APPORTIONED IN PART TO THORPE,	-11.80		SUCCESSOR TO ABELL, FRANK	1.80	
TERRENCE			SUCCESSOR TO BOISE CASCADE BUILDING	16.92	
TOTAL		0.00	CO		
GRANZ, ISABELA J	380.00		SUCCESSOR TO GEORGIA-PACIFIC CORP	3.40	
PARTITIONED TO HEIRS:			SUCCESSOR TO KAUFMAN, LEO AND	44.40	
ISABELA J GRANZ ESTATE	-33.80		SHELDON BAER		
JOUGHIN TORRANCE RANCH	-212.42		SUCCESSOR IN PART TO GEORGE R	1.37	
GEORGE R MURDOCK	-15.12		MURDOCK		
EMMA J OSBORN	-32.66		TOTAL		4,449.89
SUBJECT TO LONG TERM LEASE TO:	-59.60		INOSE ET AL		
STANDARD OIL CO OF CALIF			(KEN K INOSE, KAY K INOSE, KIYOKO YOSHIYAMA,		
SUPERIOR OIL CO	-26.40		KENICHI INOSE, KAYOKO K INOSE AND		
TOTAL		0.00	DAVID T NAKATANI, TRUSTEE OF THE INOSE CHILDREN		
GRANZ, ISABELA J, ESTATE OF			TRUST U/D/T DATE 11/1/78)		
SUCCESSOR IN PART TO ISABELA J GRANZ	33.80		(FORMERLY INOSE, KENICHI)		
SOLD IN PART TO RICHARD BARCLAY AND R A	-13.55		SUCCESSOR TO HUNT, DONALD G	1.90	
WATT			SUCCESSOR TO THAXTER, RALPH AND LOIS A	3.50	
SOLD IN PART TO NED EWING, ET AL	-6.50		LENOIR		
SOLD IN PART TO R A WATT, INC	-13.75		SOLD TO POTHOS CORP	-5.40	
TOTAL		0.00	TOTAL		0.00
HARRIS, R AND L			INOSE, KENICHI		
SUCCESSOR TO LAWRENCE I LISTON	0.70		(NOW KNOWN AS INOSE ET AL)		
DISCLAIMED WATER RIGHT	-0.70		JENKINS, HARRY C		
TOTAL		0.00	SUCCESSOR TO H L PERRY	1.80	
HARRIS TUBE, INC			SOLD TO ABC NURSERY, INC	-1.80	
SUCCESSOR IN PART TO B ROBINSON AND	0.70		TOTAL		0.00
ASSOCIATES			JOHNS-MANVILLE PRODUCTS CORP		
TRANSFERRED TO AUTOMATION IND INC-	-0.70		(SEE JOHNS-MANVILLE SALES CORP)		
HARRIS TUBE			JOHNS-MANVILLE SALES CORP		
TOTAL		0.00	(FORMERLY: JOHNS-MANVILLE PRODUCTS CORP		
HAWTHORNE, CITY OF	1,882.00		MANVILLE SERVICE CORP)		
TOTAL		1,882.00	(NOW KNOWN AS MANVILLE SALES CORP)		
HENDERSON, BEATRICE M	1.30		TOTAL		0.00
ABANDONED WATER RIGHT	-1.30		JOHNSTON, A S, DRILLING CO	11.90	
TOTAL		0.00	ASSIGNED TO GERAHUE LAND CO	-11.90	
HEYDENBECK, JEANETTE R			TOTAL		0.00
(FORMERLY JEANETTE R REIFSNYDER)	0.70		JONES, ANNA MAE	50.20	
SOLD TO DOMINGUEZ WATER CORP	-0.70		SOLD TO CITY OF TORRANCE	-50.20	
TOTAL		0.00	TOTAL		0.00
HILLSIDE MEMORIAL PARK	16.70		JOUGHIN TORRANCE RANCH		
SUCCESSOR TO SANTA FE LAND	39.50		SUCCESSOR IN PART TO ISABELA J GRANZ	212.42	
IMPROVEMENT CO			SOLD IN PART TO BARCLAY HOLLANDER	-3.33	
SUCCESSOR TO SIGMUND S AND LIONEL S	12.50		CURCI INC		
HOCKWALD			SOLD IN PART TO BOISE CASCADE BUILDING	-16.92	
SUCCESSOR TO THORPE, TERRENCE	11.80		CO		
SUCCESSOR TO BRANDSMA, MAYNARD	11.80		SOLD IN PART TO COLLISTER, CAMERON	-136.82	
SUCCESSOR TO AQUA CAPITAL	11.80		SOLD IN PART TO R A WATT, INC	-55.35	
MANAGEMENT L.P.			TOTAL		0.00
TOTAL		104.10	JUNGQUIST, FRED A		
HOCKWALD, SIGMUND S AND LIONEL S	12.50		(FORMERLY KATHERINE P WOODMAN)	3.70	
SOLD TO HILLSIDE MEMORIAL PARK	-12.50		SOLD TO ROBERT G FLETCHER ET AL	-3.70	
TOTAL		0.00	TOTAL		0.00
HOLLYWOOD PARK INC			KAHLERT, ET AL		

AND SUCCESSOR IN PART TO KELLY PIPE CO	18.90		LOS ANGELES COUNTY WESTERN AVE GOLF COURSE		
SOLD TO SPARKLETTS DRINKING WATER	-18.90		(FORMERLY BOARD OF RETIREMENT OF THE LOS		
CORP			ANGELES COUNTY EMPLOYEES RETIREMENT		
TOTAL		0.00	SYSTEM)		
KAUFMAN, LEO AND SHELDON BAER			(NOW KNOWN AS LOS ANGELES CHESTER L		
SUCCESSOR TO FUTURA INDUSTRIES INC	44.40		WASH GOLF)		
SOLD TO CITY OF INGLEWOOD	-44.40		LOYOLA MARYMOUNT UNIVERSITY		
TOTAL		0.00	(FORMERLY LOYOLA UNIVERSITY OF LOS ANGELES)	48.10	
KELLY PIPE CO	49.00		TOTAL		48.10
SOLD IN PART TO STATE OF CALIFORNIA	-16.30		MANHATTAN BEACH, CITY OF	1,131.20	
SOLD IN PART TO KAHLERT, ET AL	-18.90		TOTAL		1,131.20
SOLD IN PART TO SPARKLETTS DRINKING	-13.80		MANVILLE SALES CORP	881.00	
WATER CORP			(FORMERLY: JOHNS-MANVILLE SALES CORP		
TOTAL		0.00	JOHNS-MANVILLE PRODUCTS		
KINDER MORGAN LIQUIDS TERMINALS, LLC.			CORP MANVILLE SERVICE)		
SUCCESSOR TO GATX TANK STORAGE	167.00		SOLD TO ATLANTIC RICHFIELD CO	-881.00	
TERMINALS CORP.			TOTAL		0.00
TOTAL		167.00	MANVILLE SERVICE CORP		
KITA, ISAMU, KASUO, AND YOSHIKI R	32.60		(SEE JOHNS-MANVILLE SALES CORP)		
SOLD TO DON WILSON BUILDERS	-32.60		MARTIN BROTHERS BOX CO, INC	3.40	
TOTAL		0.00	SOLD TO SOUTHWEST STEEL ROLLING MILLS	-3.40	
KURTZ, GLADYS	3.50		TOTAL		0.00
SOLD TO SPARKLETTS DRINKING WATER	-3.50		MAYFLOWER NURSERIES	0.00	
CORP			(HERBERT SAKAYE FUKUWAI, DBA)		
TOTAL		0.00	TOTAL		0.00
LAGERLOF, STANLEY C			MCCANDLESS, JAMES	6.70	
SUCCESSOR TO LESLIE R FLESCHE AND	3.50		SOLD TO SPARKLETTS DRINKING WATER	-6.70	
ANDOR PASTERNAK, ET AL			CORP		
SOLD TO SHELL OIL CO	-3.50		TOTAL		0.00
TOTAL		0.00	MCDONNELL DOUGLAS CORP		
LAWLER, JAMES K	3.10		(FORMERLY DOUGLAS AIRCRAFT, CO INC)		
SOLD TO B ROBINSON AND ASSOC	-3.10		LONG TERM LEASE FROM UNITED STATES	1.70	
TOTAL		0.00	NAVY DEPARTMENT		
LERMENS, EVELYN			TOTAL		1.70
(FORMERLY LERMENS, ALFRED)	0.70		MOBIL OIL CORP		
SOLD TO COASTLINE CHURCH OF CHRIST	-0.70		(FORMERLY SOCONY MOBIL OIL CO)	2,570.00	
TOTAL		0.00	SUCCESSOR TO SUPERIOR OIL CO	26.40	
LEUZINGER, EMMA L	1.40		TOTAL		2,596.40
TOTAL		1.40	MONETA MUTUAL WATER CO	916.00	
LISTON, LAWRENCE	0.70		SOLD TO CITY OF TORRANCE	-916.00	
SOLD TO R AND L HARRIS	-0.70		TOTAL		0.00
TOTAL		0.00	MONIZ, JOE JR	2.20	
LITTLE, WILLIAM			SOLD TO STATE OF CALIFORNIA	-2.20	
SUCCESSOR TO ROCKWELL, MICHAEL	0.10		TOTAL		0.00
SOLD TO WATT INDUSTRIAL PROPERTIES	-0.10		MONTROSE CHEMICAL CORPORATION OF		
TOTAL		0.00	CALIFORNIA		
LOMITA, CITY OF WATER SYSTEM (WWD 13)	1,352.00		SUCCESSOR TO CARSON-HARBOR VILLAGE	1.20	
(FORMERLY LOS ANGELES COUNTY			MOBILE HOME PARK (9-28-2011)		
WATERWORKS DISTRICT NO 13)			TOTAL		1.20
TOTAL		1,352.00	MORAN, RONALD E		
LONG BEACH, CITY OF	0.70		SUCCESSOR IN PART TO COLUMBIA	9.00	
TOTAL		0.70	BROADCASTING SYSTEM, INC		
LOPES, FRANK	3.70		SOLD TO CITY OF TORRANCE	-9.00	
TOTAL		3.70	TOTAL		0.00
LOS ANGELES, CITY OF	1,503.00		MORI, ROY H AND KENJI		
TOTAL		1,503.00	SECOND WEST COAST BASIN JUDGMENT	5.60	
LOS ANGELES COUNTY-ALONDRA PARK	28.70		SOLD TO NOZAKI, SUMIKICHI	-2.00	
SUCCESSOR TO LOS ANGELES COUNTY	39.00		TOTAL		3.60
FLOOD CONTROL DIST			MURDOCK, GEORGE R		
MERGED WITH LOS ANGELES COUNTY	-67.70		SUCCESSOR IN PART TO ISABELA J GRANZ	15.12	
CHESTER L. WASHINGTON GOLF COURSE			SOLD IN PART TO R BARCLAY AND R A WATT	-13.75	
UNDER NEW NAME "LOS ANGELES COUNTY			SOLD IN PART TO CITY OF INGLEWOOD	-1.37	
RECREATION FACILITIES"			TOTAL		0.00
TOTAL		0.00	MYRON Z. CHLAVIN AND NETTIE DESSER TRUST AND		
LOS ANGELES COUNTY CHESTER L WASHINGTON			JHD PROPERTIES, LLC		
GOLF COURSE			SUCCESSOR TO DESSER ENTERPRISES, INC.	0.00	
(FORMERLY LOS ANGELES COUNTY WESTERN	296.00		TOTAL		0.00
AVENUE GOLF COURSE)			NAKANO, KIKUNO, ET AL	19.30	
MERGED WITH LOS ANGELES COUNTY	-296.00		SOLD TO DOMINGUEZ WATER CORP	-19.30	
ALONDRA PARK UNDER NEW NAME "LOS			TOTAL		0.00
ANGELES COUNTY RECREATION			NAVARRO, T C	53.90	
FACILITIES"			SOLD TO HILARIO S AND EMMA ALWAG	-53.90	
TOTAL		0.00	TOTAL		0.00
LOS ANGELES COUNTY FLOOD CONTROL DISTRICT	37.60		NORAIR, A DIVISION OF NORTHROP CORP		
SUCCESSOR IN PART TO A H SMITH, ET AL	1.40		(FORMERLY KNOWN AS NORTHROP AIRCRAFT, INC)		
SOLD TO LOS ANGELES COUNTY - ALONDRA	-39.00		(NOW KNOWN AS NORTHROP CORP)		
PARK			NORMANDIE PARK		
TOTAL		0.00	SUCCESSOR TO COLLISTER, CAMERON	136.82	
LOS ANGELES COUNTY RECREATION FACILITIES			SOLD TO CITY OF TORRANCE	-136.82	
MERGER OF LOS ANGELES COUNTY ALONDRA	67.70		TOTAL		0.00
PARK, AND LOS ANGELES COUNTY			NORTHROP CORP		
CHESTER L. WASHINGTON GOLF COURSE	296.00		(FORMERLY KNOWN AS NORAIR, A DIV OF	38.15	
TOTAL		363.70	NORTHROP CORP)		
LOS ANGELES COUNTY SANITATION DIST NO 2	102.00		TOTAL		38.15
TOTAL		102.00	NOZAKI, SUMIKICHI		
LOS ANGELES COUNTY WATERWORKS DISTRICT NO 13			SUCCESSOR IN PART TO MORI, ROY H AND	2.00	
(NOW KNOWN AS LOMITA, CITY OF WATER			KENJI		
SYSTEM WWD 13)			SUCCESSOR IN PART TO UNITED CALIFORNIA	5.00	
LOS ANGELES COUNTY WATERWORKS DISTRICT NO 22	551.00		BANK		
SOLD TO SOUTHERN CALIF WATER CO	-551.00		TOTAL		7.00
TOTAL		0.00	OCEAN INDUSTRIES		

SUCCESSOR TO WATT INDUSTRIAL PROPERTIES (NAME CHANGE)	0.10		SANTA FE LAND IMPROVEMENT CO	39.50	
TOTAL		0.10	SOLD TO HILLSIDE MEMORIAL PARK	-39.50	
OSBORN, EMMA J			TOTAL		0.00
SUCCESSOR IN PART TO ISABELA J GRANZ	32.66		SCANDA, JAMES AND GEORGE NASSIN	1.90	
SOLD TO R BARCLAY AND R A WATT	-32.66		SOLD TO DONALD G HUNT	-1.90	
TOTAL		0.00	TOTAL		0.00
OTANI, CHISATO	0.00		SCHLAEGEL, KEITH W AND OPAL B	13.60	
TOTAL		0.00	SOLD TO SIDNEY R AND CHARLOTTE W TITLE	-13.60	
PACIFIC CREST CEMETERY CO	17.70		TOTAL		0.00
SUCCESSOR TO H S SCOTT	9.50		SCOTT, H S		
SUCCESSOR TO WADA, KAORU AND SATORU	12.20		SUCCESSOR TO W F BURKE AND LOIS PRICE	9.50	
TOTAL		39.40	QUITCLAIMED TO PACIFIC CREST CEMETERY	-9.50	
PALOS VERDES BEGONIA FARM			CO		
SUCCESSOR TO GUS A BAUMAN	0.00		TOTAL		0.00
TOTAL		0.00	SEABACK, ALFRED D AND RUTH	3.50	
PALOS VERDES WATER CO	999.00		SOLD TO LESLIE R FLESH AND OR	-3.50	
SOLD TO CALIFORNIA WATER SERVICE CO	-999.00		PASTERNAK, ET AL		
TOTAL		0.00	TOTAL		0.00
PARK WATER CO	160.00		SEPULVEDA, LOUIS M	0.70	
SOLD TO SOUTHERN CALIFORNIA WATER	-160.00		ACQUIRED BY RUFFNER CORP	-0.70	
TOTAL		0.00	TOTAL		0.00
PARKE, ZORAIDA	1.80		SHEETS, ESTHER M		
SOLD TO H L PERRY	-1.80		(FORMERLY CLYDE L SHEETS)		
TOTAL		0.00	(SEE DENNIS, ESTHER M SHEETS)		
PASCHKE, WILLIAM JOSEPH	0.02		SHELL OIL CO	4,516.00	
ABANDONED WATER RIGHT	-0.02		SUCCESSOR TO LAGERLOF, STANLEY C	3.50	
TOTAL		0.00	SOLD IN PART TO UNION OIL CO OF CAL	-1,974.00	
PERRY, H L			SOLD IN PART TO UNION OIL CO OF CAL	-1,526.00	
SUCCESSOR TO ZORAIDA PARKE	1.80		TOTAL		1,019.50
SOLD TO HARRY C JENKINS	-1.80		SHELL OIL PRODUCTS US		
TOTAL		0.00	SUCCESSOR TO EQUILON ENTERPRISES, LLC	3,432.00	
PHILLIPS 66 COMPANY			SOLD TO TESORO REFINING AND MARKETING		
(FORMERLY CONOCOPHILLIPS COMPANY)	6,170.00		COMPANY	-3,432.00	
TOTAL		6,170.00	TOTAL		0.00
PHILLIPS PETROLEUM CO			SHINODA BROTHERS, INC		
(FORMERLY TIDEWATER OIL CO)	167.00		SECOND WEST COAST BASIN JUDGMENT	22.50	
SOLD TO GATX TANK STORAGE TERM CORP	-167.00		SOLD TO GARRETT CORP, THE	-22.50	
TOTAL		0.00	TOTAL		0.00
POTHOS CORP			SMITH, A H, (SAM SURBER AND FRED A SMITH)	9.70	
SUCCESSOR TO INOSE ET AL	5.40		SOLD IN PART TO STATE OF CALIFORNIA	-2.60	
SOLD TO EVERGREEN AMERICA CORP	-5.40		SOLD IN PART TO GRAND LAND CO	-5.70	
TOTAL		0.00	SOLD IN PART TO L A CO FLOOD CONTROL	-1.40	
REHOR, JOSEPHINE P	2.20		DISTRICT		
TOTAL		2.20	TOTAL		0.00
REIFSNYDER, JEANETTE R			SOCONY MOBIL OIL CO		
(NOW KNOWN AS JEANNETTE R HEYDENBECK)			(SEE MOBIL OIL CO)		
RHODIA, INC			SOLVAY USA INC.		
(NOW KNOWN AS SOLVAY USA INC.)			(NOW KNOWN AS ECO SERVICES OPERATIONS LLC)	0.00	
SUCCESSOR TO RHONE-POULENC INC			SOUTHERN CALIFORNIA EDISON CO	10.40	
RHONE-POULENE BASIC CHEMICALS CO			SUCCESSOR TO ASSOCIATED SOUTHERN	46.70	
SUCCESSOR TO STAUFFER CHEMICAL CO	521.00		INVESTMENT CO		
SOLD TO RHONE-POULENE INC	-521.00		TOTAL		57.10
TOTAL		0.00	SOUTHERN CALIFORNIA WATER CO	6,265.30	
RHONE-POULENC INC			SUCCESSOR TO EWING, CARMELITA	91.30	
SUCCESSOR TO RHONE-POULENC, BASIC	521.00		ROSECRANS		
CHEMICALS CO			SUCCESSOR TO LOS ANGELES COUNTY	551.00	
SOLD TO RHODIA, INC	-521.00		WATERWORKS DIST NO 22		
TOTAL		0.00	SUCCESSOR TO PARK WATER CO	160.00	
RICHFIELD OIL CORP			SUCCESSOR TO RYAN AERONAUTICAL CO	20.20	
(NOW KNOWN AS ATLANTIC RICHFIELD CO)			SUCCESSOR TO SOUTHERN PACIFIC CO	166.00	
ROBINSON, B, AND ASSOCIATES			SUCCESSOR IN PART TO OWEN W CURTIS	3.44	
SUCCESSOR TO JAMES K LAWLER	3.10		SUCCESSOR IN PART TO B ROBINSON AND	2.40	
SOLD IN PART TO HARRIS TUBE, INC	-0.70		ASSOCIATES		
SOLD IN PART TO SOUTHERN CALIFORNIA	-2.40		SUCCESSOR TO WESTERN WATER SERVICE	242.60	
WATER CO			COMPANY		
TOTAL		0.00	NAME CHANGE TO GOLDEN STATE WATER	-7,502.24	
ROCKWELL, MICHAEL L			COMPANY		
SUCCESSOR TO BANK OF AMERICA NATIONAL	0.10		TOTAL		0.00
TRUST AND SAVINGS ASSOCIATION			SOUTHERN PACIFIC CO	166.00	
(TRUST B 1-51)			SOLD TO SO CALIFORNIA WATER CO	-166.00	
SOLD TO LITTLE, WILLIAM	-0.10		TOTAL		0.00
TOTAL		0.00	SOUTHERN WESTERN PORTLAND CEMENT COMPANY	15.00	
RODRIGUEZ, FLAVIO	6.10		SOLD TO CHANDLERS PALOS VERDES AND		
SOLD TO STATE OF CALIFORNIA	-4.00		GRAVEL CORP	-15.00	
DISCLAIMED WATER RIGHT	-2.10		TOTAL		0.00
TOTAL		0.00	SOUTHWEST STEEL ROLLING MILLS		
ROMAN CATHOLIC ARCHBISHOP OF LOS ANGELES	72.30		SUCCESSOR TO MARTIN BROTHERS BOX CO,	3.40	
(HOLY CROSS CEMETERY)			INC		
TOTAL		72.30	SOLD TO COAST FOREST PRODUCTS	-3.40	
ROLLING HILLS COUNTRY CLUB			TOTAL		0.00
SUCCESSOR TO CHANDLERS PALOS VERDES	290.00		SPANISH AMERICAN INSTITUTE	44.40	
SAND AND GRAVEL CORP.			SOLD TO FUTURA INDUSTRIES, INC	-44.40	
TOTAL		290.00	TOTAL		0.00
RUFFNER CORP			SPARKLETTS DRINKING WATER CORP		
SUCCESSOR TO LOUIS M SEPULVEDA	0.70		SUCCESSOR TO ANDERSON, REMBERT C, ET	80.50	
ABANDONED WATER RIGHT	-0.70		AL		
TOTAL		0.00	SUCCESSOR TO CALIFORNIA, STATE OF	26.10	
RYAN AERONAUTICAL CO	20.20		SUCCESSOR TO KAHLERT, ET AL	18.90	
SOLD TO SOUTHERN CALIFORNIA WATER CO	-20.20		SUCCESSOR TO KURTZ, GLADYS	3.50	
TOTAL		0.00			

West Coast Basin Watermaster

SUCCESSOR TO MCCANDLESS, JAMES	6.70		MERGED INTO CONOCOPHILLIS COMPANY	6,170.00	
SUCCESSOR TO WECHSLER, B A	3.10		TOTAL		0.00
SUCCESSOR IN PART TO KELLY PIPE CO	13.80		TUNE, MATES, ET AL		
SOLD TO WESTERN WATER CO	-152.60		SUCCESSOR TO JOSEPHINE WATKINSON	3.10	
TOTAL		0.00	SOLD TO B A WECHSLER	-3.10	
STANDARD OIL CO OF CALIFORNIA			TOTAL		0.00
(NOW KNOWN AS CHEVRON U S A, INC)			UNION NURSERY, INC		
STAUFFER CHEMICAL CO	521.00		SECOND WEST COAST BASIN JUDGMENT	4.70	
SOLD TO RHONE-POULENC BASIC CHEMICALS	-521.00		SOLD TO CENTURY BUILDERS	-4.70	
CO			TOTAL		0.00
TOTAL		0.00	UNION OIL CO OF CALIFORNIA	2,670.00	
SUNRISE GROWERS, INC			SUCCESSOR IN PART TO SHELL OIL CO	1,974.00	
SUCCESSOR TO AMERICAN PLANT GROWERS	10.00		SUCCESSOR IN PART TO SHELL OIL CO	1,526.00	
INC			SOLD TO TOSCO CORP	-6,170.00	
SOLD TO AMERICAN PLANT GROWERS, INC	-10.00		TOTAL		0.00
TOTAL		0.00	UNITED CALIFORNIA BANK		
SUPERIOR OIL CO			SUCCESSOR TO BALLMAN, ROSEMARY N	7.00	
SUBJECT TO LONG TERM LEASE FROM	26.40		SOLD TO A B C NURSERY, INC	-2.00	
ISABELA J GRANZ			SOLD TO NOZAKI, SUMIKICHI	-5.00	
SOLD TO MOBIL OIL CORP	-26.40		TOTAL		0.00
TOTAL		0.00	UNITED STATES NAVY DEPARTMENT	1.70	
SWICK, PEGGY	5.50		LONG TERM LEASE TO MCDONNELL DOUGLAS	-1.70	
SOLD TO HILARIO AND EMMA ALWAG	-5.50		CORP PER JUDGEMENT		
TOTAL		0.00	TOTAL		0.00
TESORO REFINING AND MARKETING COMPANY			UNITED STATES STEEL CORP	1,791.00	
SUCCESSOR TO SHELL OIL PRODUCTS US			SOLD TO TORRANCE, CITY OF	-1,791.00	
(NOW KNOWN AS TESORO REFINING &			TOTAL		0.00
MARKETING COMPANY LLC)			VERBURG, WILLIAM AND CLARA B	6.70	
TESORO REFINING & MARKETING COMPANY LLC	3,432.00		SOLD TO ABC NURSERY, INC	-6.70	
(FORMERLY TESORO REFINING AND			TOTAL		0.00
MARKETING COMPANY)			VUKELICH MIKE, JR.		
SUCCESSOR TO ATLANTIC RICHFIELD	5,309.00		SUCCESSOR TO AMERICAN PLANT	10.00	
COMPANY (6-13-2013)			GROWERS, INC.		
TOTAL		8,741.00	TOTAL		10.00
TEXACO, INC			WADA, KAORU AND SATORU	12.20	
(NOW KNOWN AS TEXACO REFINING AND			SOLD TO PACIFIC CREST CEMETERY CO	-12.20	
MARKETING, INC)			TOTAL		0.00
TEXACO REFINING AND MARKETING, INC	3,432.00		WATKINSON, JOSEPHINE	3.10	
(FORMERLY: TEXACO, INC)			SOLD TO MATES TUNE, ET AL	-3.10	
SOLD TO EQUILON ENTERPRISES, LLC	-3,432.00		TOTAL		0.00
TOTAL		0.00	WATSON LAND CO	42.60	
THAXTER, RALPH AND LOIS A LENOIR	3.50		SUCCESSOR IN PART TO DOMINGUEZ WATER	37.60	
SOLD TO KENICHI INOSE	-3.50		CORP		
TOTAL		0.00	TOTAL		80.20
THORPE, GREGORY			WATT INDUSTRIAL PROPERTIES		
SUCCESSOR IN PART TO ESTATE OF JOHN	11.80		SUCCESSOR TO WILLIAM LITTLE	0.10	
GRANT			NAME CHANGE TO OCEAN INDUSTRIES	-0.10	
SOLD TO DOMINGUEZ WATER CORP	-11.80		TOTAL		0.00
TOTAL		0.00	WATT, R A, INC		
THORPE, TERENCE			SUCCESSOR TO NED EWING, ET AL	6.50	
SUCCESSOR IN PART TO ESTATE OF JOHN	11.80		SUCCESSOR IN PART TO ISABELA J GRANZ	13.75	
GRANT			ESTATE		
SOLD TO HILLSIDE MEMORIAL PARK	-11.80		SUCCESSOR IN PART TO JOUGHIN TORRANCE	55.35	
TOTAL		0.00	RANCH		
TIDEWATER OIL CO			SOLD TO DOMINGUEZ WATER CORP	-61.85	
(SEE PHILLIPS PETROLEUM CO)			SOLD TO CITY OF TORRANCE	-13.75	
TITLE, SIDNEY R AND CHARLOTTE W			TOTAL		0.00
SUCCESSOR TO KEITH W AND OPAL B	13.60		WECHSLER, B A		
SCHLAEGE L			SUCCESSOR TO MATES TUNE, ET AL	3.10	
SOLD TO ABC NURSERY, INC	-13.60		SOLD TO SPARKLETTS DRINKING WATER	-3.10	
TOTAL		0.00	CORP		
TORRANCE, CITY OF	2,519.00		TOTAL		0.00
SUCCESSOR TO BARCLAY HOLLANDER CORP	3.33		WESTERN WATER CO		
SUCCESSOR TO BARCLAY, RICHARD AND			SUCCESSOR TO FLETCHER OIL AND REFINING	90.00	
WATT, R A	59.96		CO		
SUCCESSOR TO BELVIDERE MUTUAL WATER	33.40		SUCCESSOR TO SPARKLETTS DRINKING	152.60	
CO			WATER CORP		
SUCCESSOR TO DENNIS, ESTHER M SHEETS	5.50		SOLD TO WESTERN WATER SERVICES CO	-242.60	
SUCCESSOR TO ALCAST FOUNDRY ET AL	7.20		TOTAL		0.00
SUCCESSOR TO GONZALES, GABRIELA AND	34.30		WESTERN WATER SERVICES CO *		
MARIA R			SUCCESSOR TO WESTERN WATER CO.	242.60	
SUCCESSOR TO JONES, ANNA MAE	50.20		SOLD TO SOUTHERN CALIFORNIA WATER	-242.60	
SUCCESSOR TO MONETA WATER CO	916.00		COMPANY		0.00
SUCCESSOR TO MORAN, RONALD E	9.00		WESTON INVESTMENT CO	184.00	
SUCCESSOR TO NORMANDIE PARK	136.82		SOLD TO TORRANCE SAND AND GRAVEL	-184.00	
SUCCESSOR TO TORRANCE UNIFIED SCHOOL	59.40		CORP		
DISTRICT			TOTAL		0.00
SUCCESSOR TO UNITED STATES STEEL CORP	1,791.00		WISEBURN SCHOOL DISTRICT	8.20	
SUCCESSOR TO WATT, R A, INC	13.75		TOTAL		8.20
TOTAL		5,638.86	WOODMAN, KATHERINE P		
TORRANCE SAND AND GRAVEL CORP			(SEE FRED A JUNGQUIST)		
SUCCESSOR TO WESTON INVESTMENT CO	184.00		ZEIGLER, MAXWELL T	0.00	
SOLD TO CHANDLERS PALOS VERDES	-184.00		TOTAL		0.00
SAND AND GRAVEL CORP					
TOTAL		0.00	GRAND TOTAL	64,468.25	64,468.25
TORRANCE UNIFIED SCHOOL DISTRICT					
SUCCESSOR TO HILARIO S AND EMMA ALWAG	59.40				
SOLD TO CITY OF TORRANCE	-59.40				
TOTAL		0.00			
TOSCO CORP					
SUCCESSOR TO UNION OIL CO OF CALIF	6,170.00				

* WESTERN WTR. SERV.CO. - PARTY WITH ZERO AR FOR THE DURATION OF LONG TERM LEASE AGREEMENT WITH CHEVRON (ENDED JUNE 30, 2013)

Appendix C

Parties to the Amended Judgment

as of

June 2021

ABC Nursery, Inc

Aqua Capital Management LP

Asahi Fancy Koi, Inc.

Atlantic Richfield Company

Automation Industries, Inc.

CBS, Inc.

California Water Service Company (Hermosa Redondo)

California Water Service Company (Dominguez)

California Water Service Company (Hawthorne Lease)

Carson-Harbor Village Mobile Home Park

Carson-Madrona Company

Century Builders

Chandler's Palos Verdes Sand & Gravel Company

Chevron USA, Inc

Coastline Church of Christ

Curtis, Owen W.

Delaney, Golda, Estate of

Eco Services Operation, LLC

El Segundo, City of

Engelsma, Susan Trust

Evergreen America Corp.

Fujimoto, S.R., S.T. & J.K.

Gillingham, Florence R., et al.

Golden State Water Company

Hawthorne, City of

Hillside Memorial Park

Hollywood Park Land Company, LLC

Honeywell International, Inc.

Honold, Kristin Brandsma

Hughes Aircraft Company

Inglewood, City of

Inglewood Park Cemetery

Kinder Morgan Liquids Terminals, LLC

Leuzinger, Emma L. Estate of

Lomita, City of Water System

Long Beach, City of

Lopes, Frank

Los Angeles, City of

Los Angeles County Parks & Recreation

Los Angeles County Sanitation District 2

Loyola Marymount University

Manhattan Beach, City of

Mayflower Nurseries

McDonnell Douglas Corporation

Torrance Refining Co.

Montrose Chemical Corporation

Mori, Roy H. and Kenji

Myron Z. Chlavin & Nettie Desser Trust & JHD Pr.

Northrop Corporation

Nozaki, Sumikichi

Ocean Industries

Pacific Crest Cemetery Company

Palos Verdes Begonia Farm

Phillips 66 Company

Rehor, Josephine P.

Eco Services Operation, LLC

Rolling Hills Country Club

Rolling Hills Vista

Roman Catholic Archbishop of Los Angeles

Shell Oil Company

Southern California Edison Company

Tesoro Refining and Marketing Company

Torrance, City of

Vukelich, Mike Jr.

Water Replenishment District

Watson Land Company

West Basin Municipal Water District

Western Water Service Company

Wiseburn School District

Zeigler, Maxwell T.

Parties that are bold signify water rights holders.

Appendix D

Erratum of West Coast Basin Watermaster Annual Report
for July 1, 2019 - June 30, 2020

Report Page No.	Original Text [Error Type]	Correction
1	Summary of Pertinent Information Total Water Use by Parties: 182,487 [Calculation Error]	Summary of Pertinent Information Total Water Use by Parties: 182,496
15	Table 1 - Manhattan Beach Normal Carryover into 2020-2021: 654.01 [Bookeeping Error]	Table 1 - Manhattan Beach Normal Carryover into 2020-2021: 949.78
16	Table 2 - Manhattan Beach Storage Balance CSP: 678.72, Total: 1,131.20 [Bookeeping Error]	Table 2 - Manhattan Beach Storage Balance CSP: 1,809.92, Total: 2,262.40
17	Table 3 - Manhattan Beach Carryover Conversion: 1,127.70 CSP [Bookeeping Error]	Table 3 - Manhattan Beach Carryover Conversion: 181.20 CSP
18	Table 6 - Available Adjudicated Storage Capacity CSP: 27,755.92, Total: 47,847.00 [Bookeeping Error]	Table 6 - Available Adjudicated Storage Capacity CSP: 26,624.72, Total: 46,715.80